

# ALPHA

Design by Ramos & Bassols.

## Reference

**7940.**

## Application

Wall Lamps

## Installation type

Surface

## Description

Wall light designed by Ramos & Bassols with basic lines but great features. Available in matt white lacquer and chrome, matt black lacquer and chrome, matt graphite lacquer and black and matt white lacquer. Its methacrylate diffuser gives a warm, very cosy light. Alpha follows' the reader's movements as it rotates and can be angled, opening up to 75° and turning through 360°, which also enables it to provide indirect lighting.

## Diffuser

Polycarbonate diffuser

## Materials

Diffuser: Polycarbonate

Lid: Zamak

Body: Aluminum

Lid: Aluminum

## Finish



**7940-03** Matt white lacquer and chrome (RAL 9016)



**7940-04** Matt black lacquer and chrome (RAL 9005)

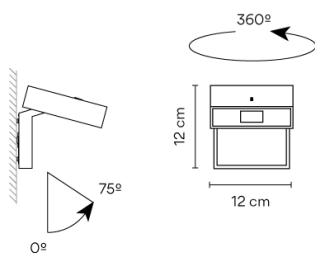


**7940-18** Matt graphite lacquer and black (RAL 7016)



**7940-93** Matt white lacquer (RAL 9016)

## Sketch



## Electrical characteristics

1 x LED2,1W 700mA

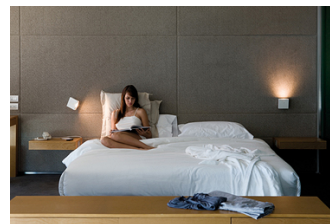
Total 2.3 W

VIBIA LIGHTING, S.L.U. Barcelona, 72 - 74. 08820 El Prat de Llobregat (Barcelona - Spain). Tel 934 796 970. Fax 934 796 973.

vibia@vibia.com www.vibia.com



# VIBIA



**Led** 2700K CRI >80 199 lm 95 lm/W

**Fixture:** 31 lm 15 lm/W

**Driver included:** CC - Constant Current 700 mA 100-240V 50/60Hz

**Electronic dimming** NO DIM

## Technical characteristics

- Switch on the base

## Physical characteristics

1 Box / 0.13 x 0.20 x 0.21 m. / Vol. 0.0054 m³ /

Gross weight 1.2 kg. / Net weight 1.1 kg.

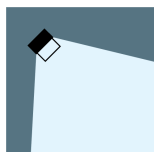
## Installation and assembly

Please, see the installation manual

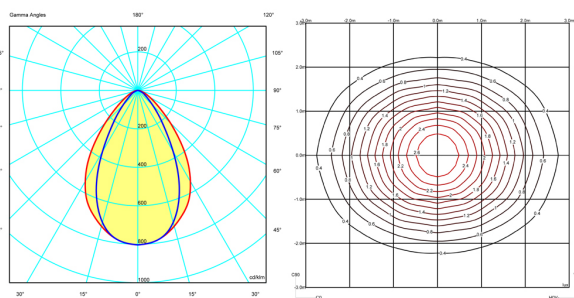
## Light distribution

### Reading

Lamp having a light beam whose main function is to supply sufficient light for reading.



## Photometric data



## Certificates



