

# PUCK

Design by Jordi Vilardell.

## Reference

**5412.**

## Application

Ceiling Lamps

## Installation type

Surface

## Description

Panel light designed by Jordi Vilardell. The use of top-quality opal triplex glass and injection-moulded aluminium gives the product a perfect finish. The product gives a warm light without shadows or glare. LED version.

## Diffuser

Mat opal triplex blown-glass diffuser

## Materials

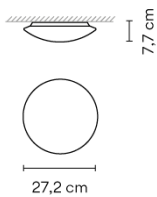
Diffuser: Blown-glass

## Finish



**5412-03** White (RAL 9016)

## Sketch



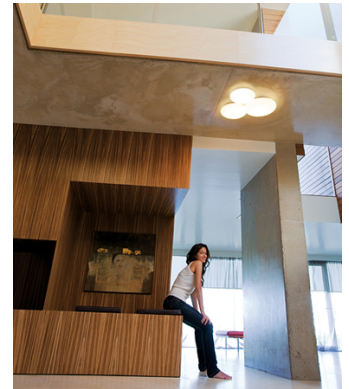
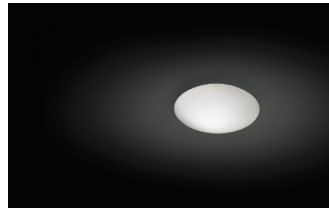
## Electrical characteristics

1 x LED 7,35W 350mA

Total 7.4 W



# VIBIA



**Led** 2700K CRI >80 822 lm 112 lm/W

**Fixture:** 467 lm 64 lm/W

**Driver included:** CC - Constant Current 350 mA 100-240V 50/60Hz

**Electronic dimming** NO DIM

## Physical characteristics

1 Box / 0.19 x 0.41 x 0.41 m. / Vol. 0.0310 m<sup>3</sup> /

Gross weight 2.2 kg. / Net weight 2.0 kg.

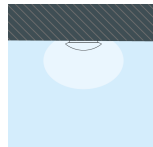
## Installation and assembly

Please, see the installation manual

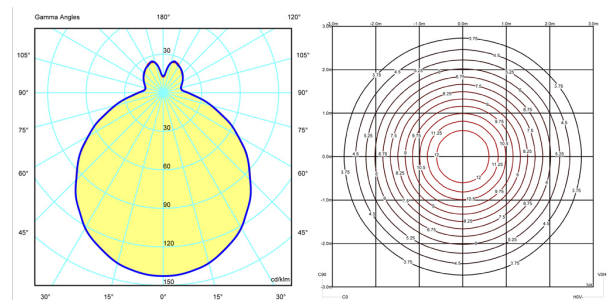
## Light distribution

### General lighting

Lamp for general lighting that equally distributes the light in all directions.



## Photometric data



## Certificates

