

PUCK

Design by Jordi Vilardell.

Reference

5402.

Application

Ceiling Lamps

Installation type

Surface

Description

Panel light designed by Jordi Vilardell. The use of top-quality opal triplex glass and injection-moulded aluminium gives the product a perfect finish. The product gives a warm light without shadows or glare. LED version.

Diffuser

Mat opal triplex blown-glass diffuser

Materials

Diffuser: Blown-glass

Finish



5402-03 White (RAL 9016)

Sketch



Electrical characteristics

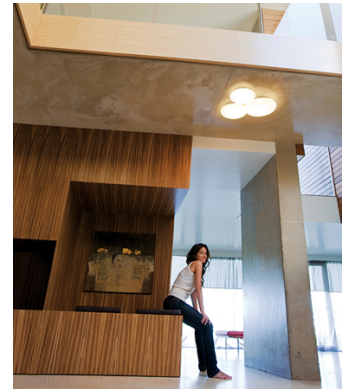
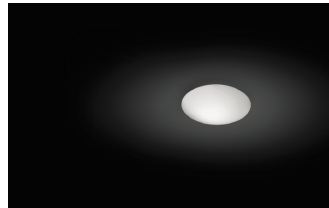
1 x LED PLATE 3W 350mA



Total 3.0 W



VIBIA



Led 2700K CRI >80 335 lm 112 lm/W

Fixture: 214 lm 71 lm/W

Driver included: CC - Constant Current 350 mA 100-240V 50/60Hz

Electronic dimming NO DIM

Physical characteristics

1 Box / 0.17 x 0.27 x 0.27 m. / Vol. 0.0115 m³ /

Gross weight 0.9 kg. / Net weight 0.8 kg.

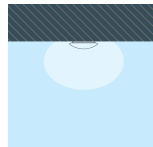
Installation and assembly

Please, see the installation manual

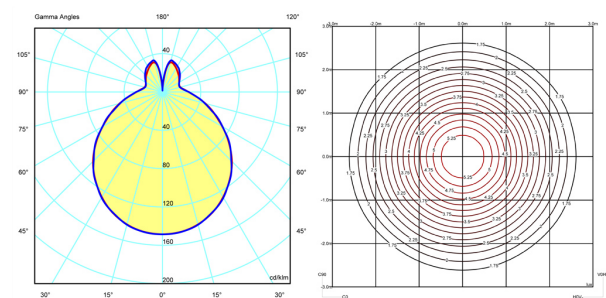
Light distribution

General lighting

Lamp for general lighting that equally distributes the light in all directions.



Photometric data



Certificates

