

LINK

Design by Ramón Esteve.

Reference

5385.

Application

Ceiling Lamps

Installation type

Surface

Description

LINK is a ceiling lamp for the home that combines three ceiling lamps and goes beyond traditional shapes. Designed by Ramón Esteve, it is available in two colours: white lacquer or shiny graphite.

Diffuser

Methacrylate diffuser

Materials

Box: Polyurethane

Diffuser: Methacrylate

Finish

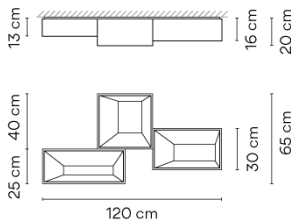


5385-03 Shiny white lacquer (RAL 9010)



5385-18 Shiny graphite lacquer (RAL 7016)

Sketch



Electrical characteristics

8 x 2G11 230V 24W

AND

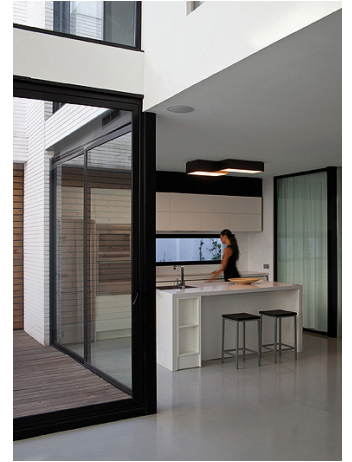
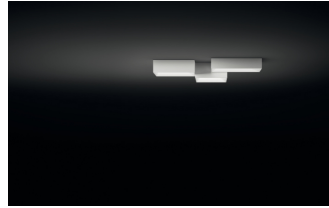
4 x 2G11 230V 18W



Total 264.0 W

A

VIBIA



Fixture: 4477 lm 17 lm/W

Driver included: CV - Contant Voltage 230V 50Hz

Physical characteristics

1 Box / 0.50 x 0.77 x 0.77 m. / Vol. 0.2964 m³ /

Gross weight 19.1 kg. / Net weight 17.2 kg.

Installation and assembly

Please, see the installation manual

Light distribution

General lighting

Lamp for general lighting that equally distributes the light in all directions.



Photometric data

Efficiency : 23.32%

Coordinate system : CG

Total flux : 19200.00 lm

Maximum value : 73.92 cd/klm

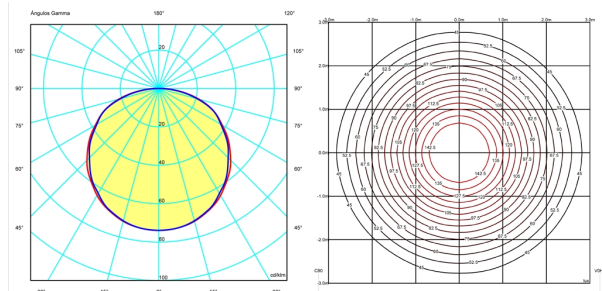
Light position : C=0.00 G=0.00

Symmetry on the planes : Double symmetrical

Isolux : Floor

Light position :

X=0.00m Y=0.00m Z=3.00m



Certificates

