

LINK

Design by Ramón Esteve.

Reference

5376.

Application

Ceiling Lamps

Installation type

Surface

Description

Geometry as decor... The Link is a series of preconfigured geometric patterns that can be arranged across the canvas of a ceiling. These configurations have shallow profiles making them ideal for residential and hospitality settings or anywhere with low ceilings. The combinations of different rectangular shapes create surface fixtures of different sizes, with up to five combined cubist forms.

Diffuser

Methacrylate diffuser

Materials

Box: Polyurethane

Diffuser: Methacrylate

Finish

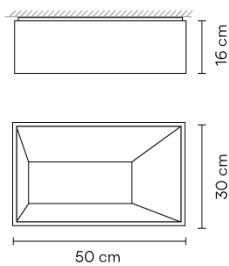


5376-03 Shiny white lacquer (RAL 9010)



5376-18 Shiny graphite lacquer (RAL 7016)

Sketch



Electrical characteristics

2 x 2G11 230V 24W

AND

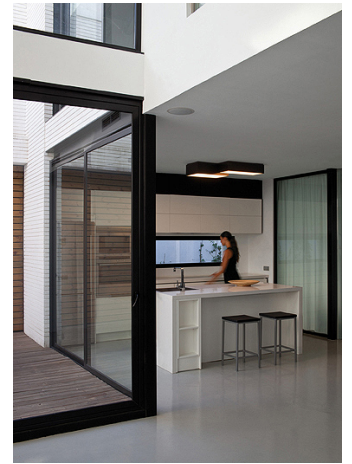
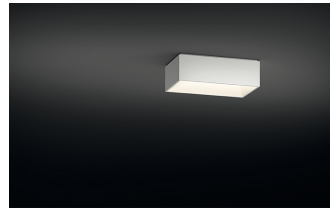
2 x 2G11 230V 18W



Total 84.0 W



VIBIA



Fixture: 1177 lm 14 lm/W

Driver included: CV - Contant Voltage 230V 50Hz

Physical characteristics

1 Box / 0.27 x 0.60 x 0.60 m. / Vol. 0.0972 m³ /

Gross weight 6.6 kg. / Net weight 5.9 kg.

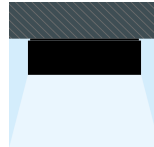
Installation and assembly

Please, see the installation manual

Light distribution

General lighting

Lamp for general lighting that equally distributes the light in all directions.



Photometric data

Efficiency : 19.62%

Coordinate system : CG

Total flux : 6000.00 lm

Maximum value : 62.28 cd/klm

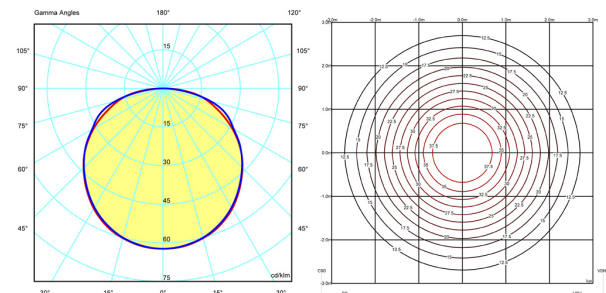
Light position : C=0.00 G=0.00

Symmetry on the planes : Double symmetrical

Isolux : Floor

Light position :

X=0.00m Y=0.00m Z=3.00m



Certificates

