

# BAMBOO

Design by Antoni Arola & Enric Rodríguez.

## Reference

**4800.**

## Application

Outdoor lamps

## Installation type

Surface

## Description

Bamboo is an outdoor beacon with three finishes that make it possible to camouflage and integrate it into the landscape, with the added surprise that it produces light. Available in khaki, stainless steel and off-white. Designed by Antoni Arola & Enric Rodríguez.

## Diffuser

Methacrylate diffuser

## Materials

Cane: Resin + fiberglass

Diffuser: Methacrylate

## Finish



**4800-07** Matt Khaki lacquer (RAL 7006)

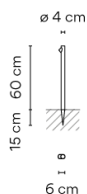


**4800-54** Matt oxide lacquer (RAL 8017)



**4800-58** Off-white matt lacquer (Pantone Warm Gray 2 U)

## Sketch



## Electrical characteristics

1 x LED2,1W 700mA



Total 2.3 W



# VIBIA



**Led** 2700K CRI >80 199 lm 95 lm/W

**Fixture:** 48 lm 23 lm/W

**Driver included:** CC - Constant Current 700 mA 100-240V 50/60Hz

**Electronic dimming** NO DIM

## Physical characteristics

1 Box / 0.13 x 0.13 x 1.30 m. / Vol. 0.0203 m³ /

Gross weight 4.0 kg. / Net weight 3.6 kg.

## Installation and assembly

Please, see the installation manual

## Light distribution

### Ground lighting

Reduced-height outdoor lamp to shade light on the ground.



## Photometric data

Efficiency : 26.27%

Coordinate system : CG

Total flux : 181.22 lm

Maximum value : 287.63 cd/klm

Light position : C=270.00 G=50.00

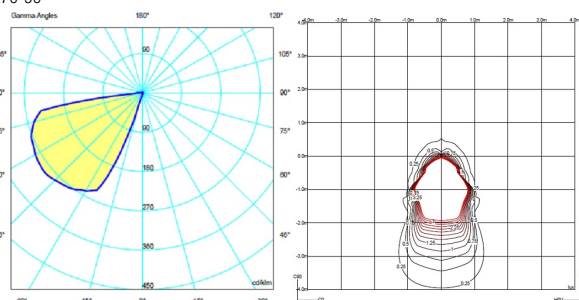
Symmetry on the planes : Symmetrical planes

270-90

Isolux : Floor

Light position :

X=0.00m Y=0.00m Z=0.56m



## Certificates

