

# PIN

Design by Ichiro Iwasaki.

## Reference

**1650.**

## Application

Table Lamps

## Installation type

Surface

## Description

Table lamp. Design by Ichiro Iwasaki. This reading lamp is characterized by having a short arm and an adjustable head. Available in white, black, cream and green matt finishes.

## Diffuser

Polycarbonate diffuser

## Materials

Head: Aluminium

Base: Zamak

Diffuser: Polycarbonate

Rods: Steel

## Finish



**1650-04** Matt black lacquer (NCS 9000N)



**1650-58** Matt cream lacquer (NCS S 2005-Y20R)

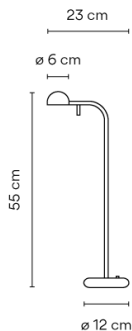


**1650-62** Matt green lacquer (NCS S 3010-G20Y)



**1650-93** Matt white lacquer (NCS S 0502-Y)

## Sketch



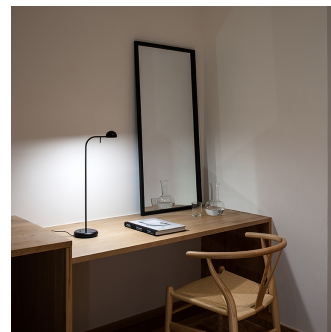
## Electrical characteristics

1 x LED 4,5W 350mA

Total 4,5 W



# VIBIA



**Led** 2700K CRI >80 450 lm 109 lm/W

**Fixture:** 208 lm 0 lm/W

**Driver included:** CC - Constant Current 350 mA 100-240V 50/60Hz

**Electronic dimming** NO DIM

## Physical characteristics

1 Box / 0.17 x 0.21 x 0.71 m. / Vol. 0.0263 m<sup>3</sup> /

Gross weight 2.9 kg. / Net weight 2.0 kg.

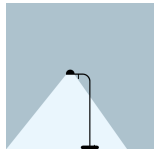
## Installation and assembly

Please, see the installation manual

## Light distribution

### Reading

Lamp having a light beam whose main function is to supply sufficient light for reading.



## Photometric data

Efficiency : 46.31%

Coordinate system : CG

Total flux : 449.94

Maximum value : 193.70

Light position : C=75.00 G=5.00

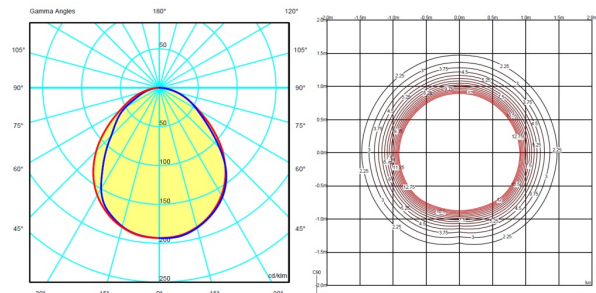
Symmetry on the planes : Symmetrical planes

270-90

Isolux : Floor

Light position :

X=0.00m Y=0.00m Z=0.55m



## Certificates



