

# ALGORITHM

Design by Toan Nguyen.

# VIBIA

## Reference

**0865.**

## Application

Hanging lamps

## Installation type

Surface / Built-in

## Description

Pendant light fitting designed by Toan Nguyen. Composed of a collection of hand blown glass spheres with LED light source suspended at different heights, anchored to the ceiling via a floating tubular structure. Available with ceiling rose or built-in. The finishes are matt graphite and matt white.

## Diffuser

Polycarbonate diffuser

## Materials

Sphere: Blown glass  
Glass fastening: Aluminum  
Diffuser: Polycarbonate  
Pendant structure: Steel

## Finish

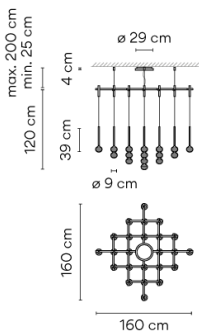


**0865-18** Matt graphite lacquer (ADAPTA RF 9913 WX)



**0865-93** Matt white lacquer (RAL 9016)

## Sketch



## Electrical characteristics

25 x LED 3,15W 1050mA

Total 78.8 W



A



**Led** 2700K CRI >80 4059 lm 99 lm/W

**Fixture:** 7808 lm 0 lm/W

**Driver included:** CC - Constant Current 1050 mA 100-240V 50/60Hz

**Electronic dimming** DALI 1-10V PUSH

**ficha.fichatecnicaproducto.regulacion.opcional** SMART

## Technical characteristics

- Request built-in canopy at [www.vibia.com](http://www.vibia.com)

- The steel cables that go from the structure to the ceiling are the only ones that allow the height of the lamp to be adjusted. The installation manual describes how to do this and how to cut the cables.

## Physical characteristics

2 Box / 0.18 x 1.69 x 1.69 m. / Vol. 0.7268 m<sup>3</sup> /

Gross weight 27.3 kg. / Net weight 20.3 kg.

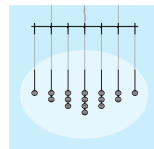
## Installation and assembly

Please, see the installation manual

## Light distribution

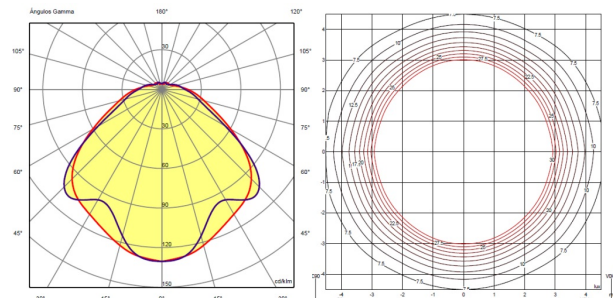
### General lighting

Lamp for general lighting that equally distributes the light in all directions.



## Photometric data

Total flux : 4059 lm



## Certificates

