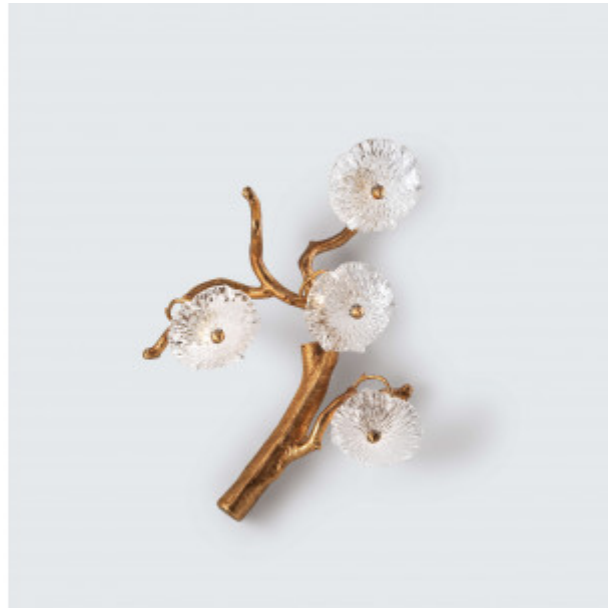


## Nenufar Nymphaea Small

REFERENCE AP1475/4



### DESCRIPTION

Ethereal and whimsical, the Nenufar Collection stands closely connected to its direct inspiration, the aqueous nature. Beyond its particular dense structure and closed shape in some designs, it seeks an uncanny levitating sense, allowing multiple perspectives through the carefully crafted Murano glass pieces. Through the glass specifications, the Nenufar achieves diffuse lighting providing an alluring romantic sense, reminiscent of the natural beauty of nature. Ideal for delicate interiors of vertical architecture.

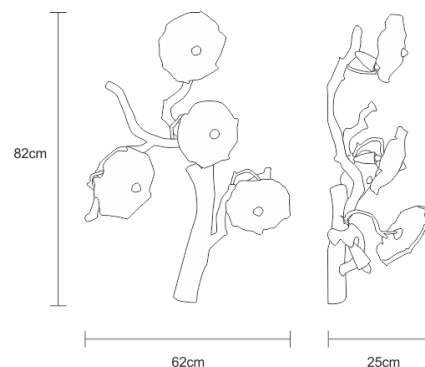
#### **Designed and produced by hand in Portugal.**

Serip reserves the right to make changes or improvements at any time it deems useful to guarantee the highest quality standards for its products.

#### **Hand-finished, some variations may occur.**

All the glass models are designed by Serip and exclusively handmade produced, establishing a unique and prestigious feature of the glass handwork art. For this reason, there is the possibility of variation in measures, weight, colour and shape represented.

### TECHNICAL DRAWING



## TECHNICAL SPECIFICATIONS

### MEASUREMENTS

#### FIXTURE SIZE & WEIGHT

**Height** 82.00cm / 32.00in  
**Depth** 30.00cm / 12.00in  
**Length** 60.00cm / 24.00in  
**Weight** 10.00kg / 22.00lb

#### PACKAGE SIZE & WEIGHT

**(m)Package 1/2** 0.95m x 0.50m x 0.95m  
=0.45CBM  
**(in)Package 1/2** 0.37in x 0.20in x 0.37in  
=15.90ft<sup>3</sup>

### ELECTRIC FEATURE

**Installation** Ceiling  
**IP degree** IP 20

**220-240V 50Hz-60Hz**  
**Max Power Consumption** 160W  
**Light Sources**  
4 x G9 Max 40W

#### Included Sources

**Light Sources**  
4 x G9 LED 2W  
**Lumens** 920lm  
**Kelvin** 3000  
**CRI** 80

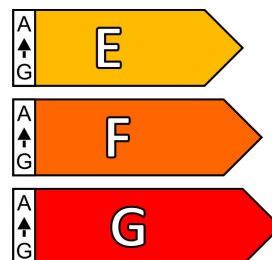
#### Optional Sources

**Light Sources**  
4 x G9 LED 3W  
**Lumens** 1200lm  
**Kelvin** 3000  
**CRI** 80

**110-120V 50Hz-60Hz**  
**Max Power Consumption** 100W  
**Light Sources**  
4 x G9 Max. 25W

### ENERGY RATING

This luminaire allows lights sources with energy efficiency class



### CERTIFICATIONS



### CARE INSTRUCTIONS

Due to the nature of our exquisite hand applied finishes, wipe clean with a soft, dry cloth or static duster must be used to clean the fixture.

Always avoid the use of harsh chemicals or abrasive cleaners as they may cause damage to the fixture's finish.

Cleaning is limited to the outer surfaces, shades or glass. It is important to ensure that no moisture enters the terminal compartment or reaches any live parts.

As our products are subject to technical modifications, we cannot guarantee, that all information is always up to date. Please contact our [technical department](#) with any queries.

# SERIP

## OPTIONAL FINISHES

### GLASS FINISHES



White (37)

Clear (10)

Bright Gold  
(06)

### METAL FINISHES



Copper (CO)



Silver (FP)



Silver/White  
Patina (FP/PB)



Lead (CH)



Palladium (PL)



Black (PR)



Gold/White  
Patina (FO/PB)



Gold (FO)



Talha (TA)

# SERIP