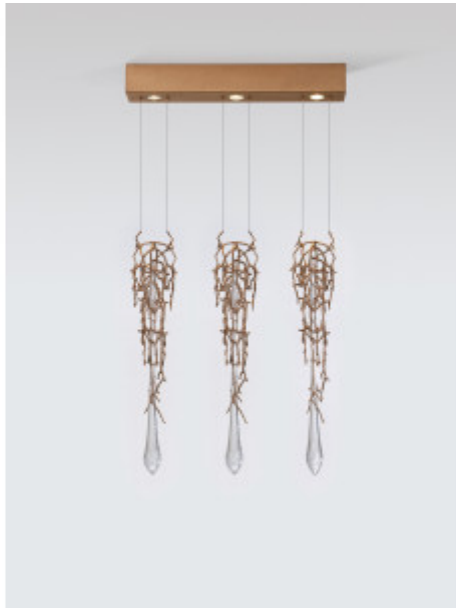


SERIP

Liquid Drip Triplet

REFERENCE CT3313/3



DESCRIPTION

Pure and dazzling, the Liquid collection presents itself intentionally as a dense design. The vast branched pattern surrounds a considerable-sized glass piece just as an embrace of nature, where the movement of the structure tries to reach the fall of a drop of water. Due to the steel cable solution, the Liquid collection is ideal for situations that require some structure and magnificence, achieving a status of lighting sculpture. Ideal for contemporary interiors, framing perfectly in a vertical display.

Finish shown here Metal RO | Glass 10

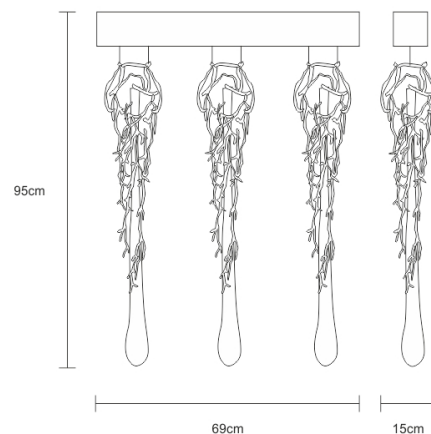
Designed and produced by hand in Portugal.

Serip reserves the right to make changes or improvements at any time it deems useful to guarantee the highest quality standards for its products.

Hand-finished, some variations may occur.

All the glass models are designed by Serip and exclusively handmade produced, establishing a unique and prestigious feature of the glass handwork art. For this reason, there is the possibility of variation in measures, weight, colour and shape represented.

TECHNICAL DRAWING



SERIP

TECHNICAL SPECIFICATIONS

MEASUREMENTS

FIXTURE SIZE & WEIGHT

Width 15.00cm / 6.00in

Height 80.00cm / 31.00in

Length 70.00cm / 28.00in

OAH Overall Height Min 95.00cm / 37.00in

OAH Overall Height Max 385.00cm / 152.00in

Weight 9.00kg / 20.00lb

PACKAGE SIZE & WEIGHT

(m)Package 1/2 0.95m x 0.60m x 0.95m

=0.54CBM

(in)Package 1/2 0.37in x 0.24in x 0.37in

=19.10ft³

ELECTRIC FEATURE

Installation Ceiling

IP degree IP 20

220-240V 50Hz-60Hz

Max Power Consumption 150W

Light Sources

3 x GU10 Max 50W

Included Sources

Light Sources

3 x GU10 LED 6W

Lumens 690lm

Kelvin 3000

CRI 90

110-120V 50Hz-60Hz

Max Power Consumption 150W

Light Sources

3 x GU10 Max 50W

ENERGY RATING

This luminaire allows lights sources with energy efficiency class



CERTIFICATIONS



CARE INSTRUCTIONS

Due to the nature of our exquisite hand applied finishes, wipe clean with a soft, dry cloth or static duster must be used to clean the fixture.

Always avoid the use of harsh chemicals or abrasive cleaners as they may cause damage to the fixture's finish.

Cleaning is limited to the outer surfaces, shades or glass. It is important to ensure that no moisture enters the terminal compartment or reaches any live parts.

As our products are subject to technical modifications, we cannot guarantee, that all information is always up to date. Please contact our [technical department](#) with any queries.

SERIP

OPTIONAL FINISHES

GLASS FINISHES



Clear (10)

METAL FINISHES



Copper (CO)



Silver (FP)



Silver/White
Patina
(FP/PB)



Lead (CH)



Palladium
(PL)



Black (PR)



Gold/White
Patina
(FO/PB)



Gold (FO)



Talha (TA)

Note The canopy has only the base finish colour. The metal finish is without patina or texture of another tone. Except for Talha and Black finishes.

SERIP