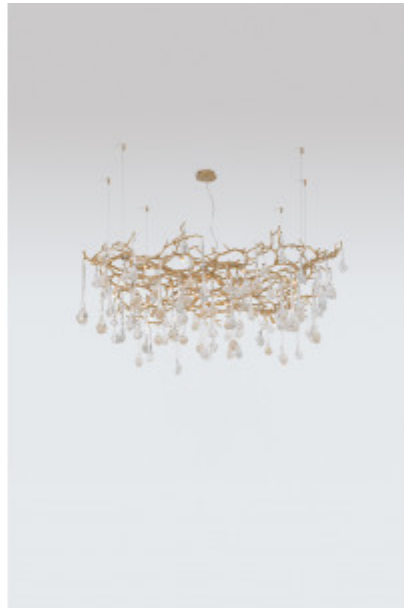


SERIP

Coral Reef

REFERENCE CT3394/20



DESCRIPTION

Inspired by the beauty and natural complexity of coral reef shapes, the Coral Collection stands as a dense structure of intertwined metal branches aiming for a faithful representation of its nature and visual impact. The glass pieces fall into the glimpse of marine organisms in a visual combination of great impression. Dense and robust, this collection integrates a complex system of detail aiming for a differential presence. Ideal for areas of extensive height and open for complex patterned details.

Finish shown here Metal FO/PB | Glass 10+43 +44

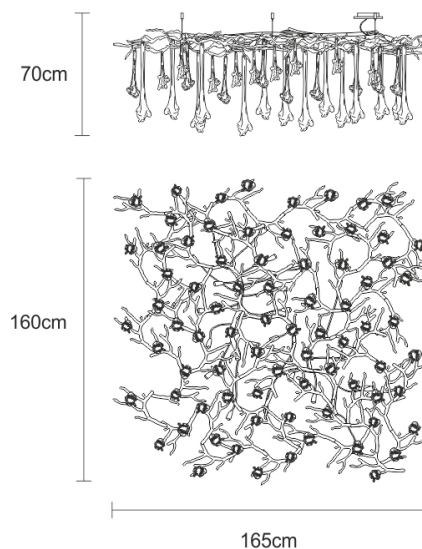
Designed and produced by hand in Portugal.

Serip reserves the right to make changes or improvements at any time it deems useful to guarantee the highest quality standards for its products.

Hand-finished, some variations may occur.

All the glass models are designed by Serip and exclusively handmade produced, establishing a unique and prestigious feature of the glass handwork art. For this reason, there is the possibility of variation in measures, weight, colour and shape represented.

TECHNICAL DRAWING



SERIP

TECHNICAL SPECIFICATIONS

MEASUREMENTS

FIXTURE SIZE & WEIGHT

Width 160.00cm / 63.00in
Height 60.00cm / 24.00in
Length 165.00cm / 65.00in
OAH Overall Height Min 70.00cm / 28.00in
OAH Overall Height Max 350.00cm / 138.00in
Weight 56.00kg / 123.00lb

PACKAGE SIZE & WEIGHT

(m)Package 1/2 1.83m x 0.97m x 1.83m
=3.25CBM
(in)Package 1/2 0.72in x 0.38in x 0.72in
=114.80ft³

ELECTRIC FEATURE

Installation Ceiling
IP degree IP 20
220-240V 50Hz-60Hz
Max Power Consumption 800W
Light Sources
20 x G9 Max 40W

Included Sources

Light Sources
20 x G9 LED 2W
Lumens 4600lm
Kelvin 3000
CRI 80

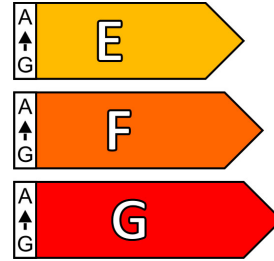
Optional Sources

Light Sources
20 x G9 LED 4W
Lumens 6400lm
Kelvin 2700
CRI 80

110-120V 50Hz-60Hz
Max Power Consumption 800W
Light Sources
20 x G9 Max 40W

ENERGY RATING

This luminaire allows lights sources with energy efficiency class



CERTIFICATIONS



CARE INSTRUCTIONS

Due to the nature of our exquisite hand applied finishes, wipe clean with a soft, dry cloth or static duster must be used to clean the fixture.

Always avoid the use of harsh chemicals or abrasive cleaners as they may cause damage to the fixture's finish.

Cleaning is limited to the outer surfaces, shades or glass. It is important to ensure that no moisture enters the terminal compartment or reaches any live parts.

As our products are subject to technical modifications, we cannot guarantee, that all information is always up to date. Please contact our [technical department](#) with any queries.

SERIP

OPTIONAL FINISHES

GLASS FINISHES



Cherry Red (45)



Silver (44)



Gold (43)



Dark Blue (42)



Grey (41)



Blue Sea (39)



Smoked (34)



Turquoise (33)



Water Blue (32)



Aubergine (29)



Lilac (28)



Flamingo (27)



Red Wine (26)



Venturini Green (25)



Linden Green (24)



Venturini (23)



Ruby (22)



Ochre (21)



Beige (20)



Opal (17)



Brown (16)



Purple (15)



Black (14)



Yellow (13)



Clear (10)



Bright Gold (06)



Honey (04)

METAL FINISHES



Copper (CO)



Silver (FP)



Silver/White Patina (FP/PB)



Lead (CH)



Palladium (PL)



Black (PR)



Gold/White Patina (FO/PB)



Gold (FO)



Talha (TA)

SERIP