

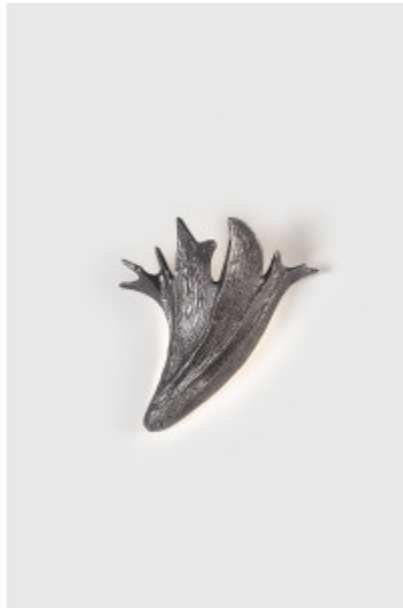
# SERIP

---

## Carpa Squama Medium Right

REFERENCE AP1490/R

---



### DESCRIPTION

Inspired by the shapes of fish scales and sea life. The unusual shape of the Carpa collection pieces stand as a closed design of intense asperity. By modular creation, this collection presents a strong decorative presence with subtle highlight through its diffuse and indirect lighting. Designed entirely with the same material, it gets its shape through the visual lines of scales of marine organisms, a dynamic combination to complement an interior design concept. Ideal for wall installations.

**Finish shown here** Metal CH

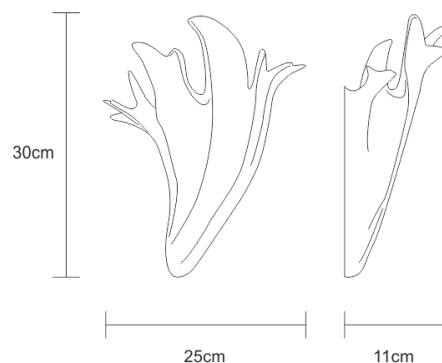
### Designed and produced by hand in Portugal.

Serip reserves the right to make changes or improvements at any time it deems useful to guarantee the highest quality standards for its products.

### Hand-finished, some variations may occur.

All the glass models are designed by Serip and exclusively handmade produced, establishing a unique and prestigious feature of the glass handwork art. For this reason, there is the possibility of variation in measures, weight, colour and shape represented.

### TECHNICAL DRAWING



---

# SERIP

## TECHNICAL SPECIFICATIONS

---

### MEASUREMENTS

#### FIXTURE SIZE & WEIGHT

**Width** 25.00cm / 10.00in  
**Height** 30.00cm / 12.00in  
**Depth** 11.00cm / 4.00in  
**Weight** 1.00kg / 3.00lb

#### PACKAGE SIZE & WEIGHT

**(m)Package 1/2** 0.64m x 0.46m x 0.64m  
=0.19CBM  
**(in)Package 1/2** 0.25in x 0.18in x 0.25in  
=6.70ft<sup>3</sup>

### ELECTRIC FEATURE

**Installation** Ceiling  
**IP degree** IP 20

**220-240V 50Hz-60Hz**  
**Max Power Consumption** 7W

#### Included Sources

**Light Sources**  
1 x LED STRIP  
**Lumens** 380lm  
**Kelvin** 3000  
**CRI** 80

**110-120V 50Hz-60Hz**  
**Max Power Consumption** 7W

### ENERGY RATING

This luminaire allows lights sources with energy efficiency class



### CERTIFICATIONS



### CARE INSTRUCTIONS

Due to the nature of our exquisite hand applied finishes, wipe clean with a soft, dry cloth or static duster must be used to clean the fixture.

Always avoid the use of harsh chemicals or abrasive cleaners as they may cause damage to the fixture's finish.

Cleaning is limited to the outer surfaces, shades or glass. It is important to ensure that no moisture enters the terminal compartment or reaches any live parts.

As our products are subject to technical modifications, we cannot guarantee, that all information is always up to date. Please contact our [technical department](#) with any queries.

---

# SERIP

## OPTIONAL FINISHES

### METAL FINISHES



Copper (CO)



Silver (FP)



Silver/White Patina  
(FP/PB)



Lead (CH)



Palladium (PL)



Black (PR)



Gold/White Patina  
(FO/PB)



Gold (FO)



Talha (TA)

SERIP