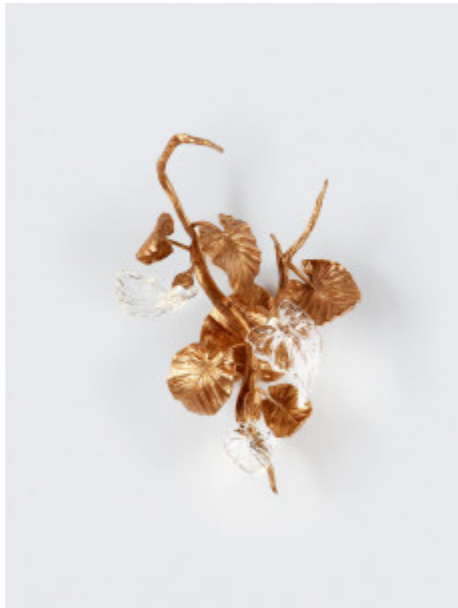


SERIP

Calathea Makoyana Medium

REFERENCE AP1519/3



DESCRIPTION

Born out of the dense and untamable tropical forests, the Calathea plant serves as the inspiration for Serip's new collection, to which it also lends its name, its elegance, and its graciousness. Calathea represents the gentil and delicate movement but imbued with the vital energy that runs through every element of Nature, making them unique. Serip's Calathea pieces are symbols of connection to Earth, to the origin of all Life touches, and, at the same time, embody the luminosity that we need so we can discover the trail that will lead us to the equilibrium, to harmony, to what is beyond ourselves, to a new beginning.

Finish shown here Metal FO | Glass 10

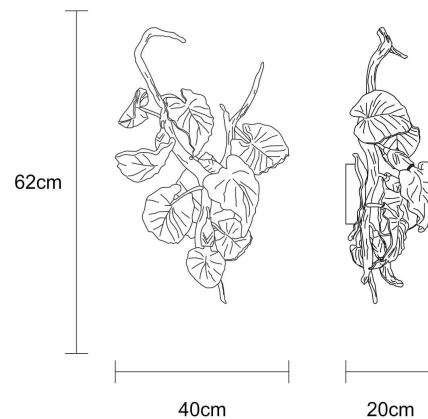
Designed and produced by hand in Portugal.

Serip reserves the right to make changes or improvements at any time it deems useful to guarantee the highest quality standards for its products.

Hand-finished, some variations may occur.

All the glass models are designed by Serip and exclusively handmade produced, establishing a unique and prestigious feature of the glass handwork art. For this reason, there is the possibility of variation in measures, weight, colour and shape represented.

TECHNICAL DRAWING



SERIP

TECHNICAL SPECIFICATIONS

MEASUREMENTS

FIXTURE SIZE & WEIGHT

Width 38.00cm / 14.80in
Height 62.00cm / 24.20in
Depth 20.00cm / 7.80in
Weight 6.00kg / 13.20lb

PACKAGE SIZE & WEIGHT

(m)Package 1/2 0.75m x 0.50m x 0.75m
=0.28CBM
(in)Package 1/2 29.53in x 16.69in x 29.53in
=9.89ft³

ELECTRIC FEATURE

Installation Wall
IP degree IP20

220-240V 50Hz-60Hz
Max Power Consumption 6W
Light Sources
3 x LED

Included Sources

Light Sources
3 x LED
Lumens 540lm
Kelvin 3000
CRI 80

110-120V 50Hz-60hZ
Max Power Consumption 6W
Light Sources
3 x LED

Included Sources

Light Sources
3 x LED
Lumens 540lm
Kelvin 3000
CRI 80

ENERGY RATING

This luminaire allows lights sources with energy efficiency class



CERTIFICATIONS



CARE INSTRUCTIONS

Due to the nature of our exquisite hand applied finishes, wipe clean with a soft, dry cloth or static duster must be used to clean the fixture.

Always avoid the use of harsh chemicals or abrasive cleaners as they may cause damage to the fixture's finish.

Cleaning is limited to the outer surfaces, shades or glass. It is important to ensure that no moisture enters the terminal compartment or reaches any live parts.

As our products are subject to technical modifications, we cannot guarantee, that all information is always up to date. Please contact our [technical department](#) with any queries.

SERIP

OPTIONAL FINISHES

GLASS FINISHES



Clear (10)

METAL FINISHES



Talha (TA)



Silver/White
Patina
(FP/PB)



Silver (FP)



Palladium
(PL)



Lead (CH)



Gold/White
Patina
(FO/PB)



Gold (FO)



Copper (CO)



Black (PR)

SERIP