

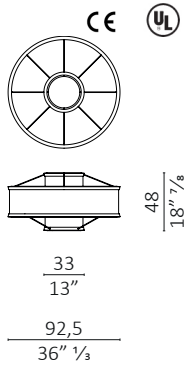
## Obon design Draw Studio

**Caratteristiche tecniche** - Lampada da soffitto con anelli in massello di noce americano. Paralume esterno in tessuto e paralume interno in vetro opalino. Tiranti in tubolare pieno di ottone brunito Ø 5-10 mm.

**Technical features** - Ceiling lamp with solid American walnut rings. External lampshade in fabric and internal lampshade in opal glass. Rods in burnished brass Ø 5-10 mm.

**Nota** - Specificare il paese di destinazione delle lampade. Costo aggiuntivo per finitura gommalacca.

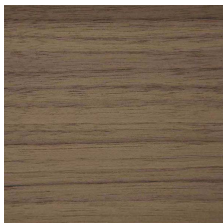
**Note** - Specify country of destination of lamps. Additional cost for shellac finish.



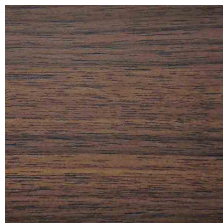
c.o.m. (l.mt.1,50)

## Finiture / Finiture

### Legno Noce / Wood Walnut



noce  
walnut



noce dark  
walnut dark



noce moka  
walnut moka

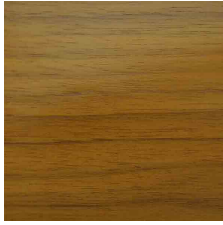


noce brown  
walnut brown

## Finiture / Finiture

### Legno Gommalacca / Wood Shellac

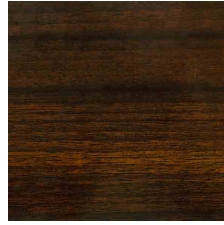
---



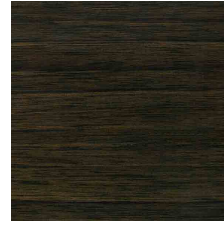
Noce Am. gommalacca  
naturale  
*Am. walnut natural  
shellac*



Noce Am. gommalacca  
nera  
*Am. walnut dark shellac*



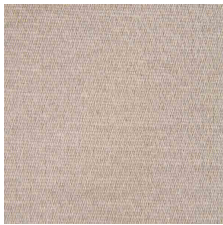
Noce Am. olio iris  
*Am. walnut Iris oil*



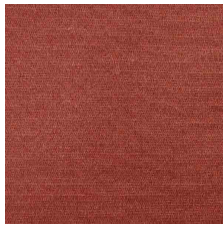
Noce Am. olio nero  
*Am. walnut black oil*

### Tessuto Raso / Fabric Satin

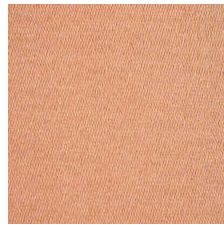
---



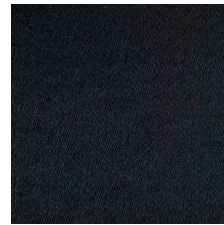
Cendrillon-006 Perle



Cendrillon-014 Rose  
Thè



Cendrillon-005 Gres



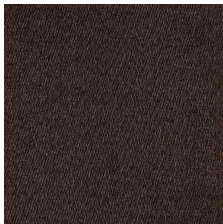
Cendrillon-010 Orage



Cendrillon-023 Olive



Cendrillon-012  
Moutarde



Cendrillon-030 Pirate