



PTMELT80

Design by Sandro Santantonio

Collection consisting of wall lamps, suspended lamps and floor lamps. The lampshades coming in various decorative patterns. Screw fitting light source.

Typology: FLOOR

Ratings

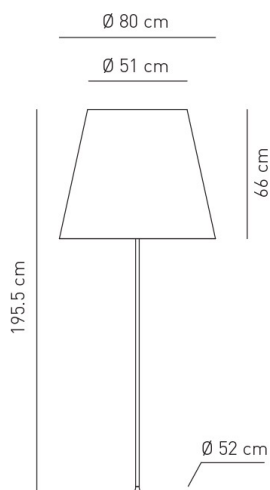
- E27
- Downlight and upright
- Floor standing
- Supply voltage ~220-240V
- Switch mode: on-off, with dimmer
- Steel frame, painted

Product code composition

MELTING POT

Type	Article	Colours	Code end	Source
PT	MELT 80	<p>FC light patterns outside / white inside</p> <p>FS dark patterns outside / white inside</p> <p>BA two light patterns outside / silver inside</p> <p>BO two light patterns outside / gold inside</p> <p>NA two dark patterns outside / silver inside</p> <p>NE two dark patterns outside / gold inside</p>	GR grey varnished metal	E27 3 x Max 16W LED or 3 x Max 70W fluo (dimmable lamps required)

kg 12 m³ 0.68

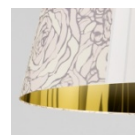
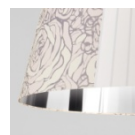
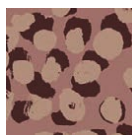
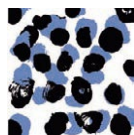
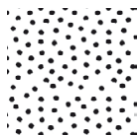


Gli articoli in rosso sono disponibili solo fino ad esaurimento scorte. Articles in red are available until sold out

CE IP20 dimmable +LED 220-240V_{AC}

example composition code PT MELT80 BA GR E27

Available colours



FC

Light patterns outside / white inside

FS

Dark patterns outside / white inside

BA

Light patterns outside/ silver inside

BO

Light patterns outside / gold inside

NA

Dark patterns outside / silver inside

NE

Dark patterns outside / gold inside

EELc (Energy Efficiency Label compatibility): E, D, C, B, A, A+, A++

PTMELT80__GRE27

CUSTOMER _____

NOTES _____

NOTICE: Luminous flux (lm) and efficacy (lm/W) for all integrates LED luminaires is estimated based on nominal ratings of the LED sources. Technical data could be subject to alteration without notice. Axo Light does not provide legal guarantee for the accuracy of this data sheet.