



PTMELT55

Design by Sandro Santantonio

Collection consisting of wall lamps, suspended lamps and floor lamps. The lampshades coming in various decorative patterns. Screw fitting light source.

Typology: FLOOR LAMP

Ratings

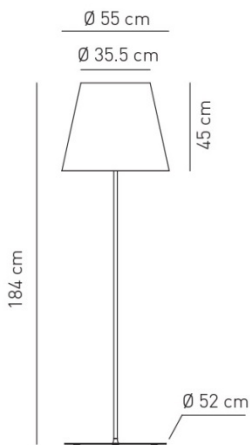
- E27
- Downlight
- Floor standing
- Supply voltage ~220-240V
- Switch mode: on-off with dimmer
- Steel frame, painted

Product code composition

MELTING POT

| Type | Article | Colours | Code end | Source |
|------|---------|--|-------------------------|---|
| PT | MELT 55 | <p>FC light patterns outside / white inside</p> <p>FS dark patterns outside / white inside</p> <p>BA two light patterns outside / silver inside</p> <p>BO two light patterns outside / gold inside</p> <p>NA two dark patterns outside / silver inside</p> <p>NE two dark patterns outside / gold inside</p> | GR grey varnished metal | E27 3 x Max 16W LED or 3 x Max 70W fluo (dimnable lamps required) |

kg 11.2 m³ 0.356

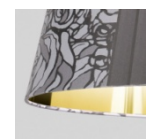
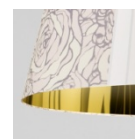
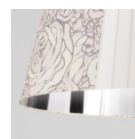
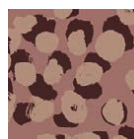
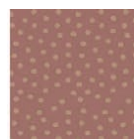
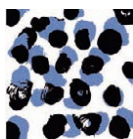
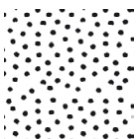


Gli articoli in rosso sono disponibili solo fino ad esaurimento scorte. Articles in red are available until sold out

CE IP20 dimmable +LED 220-240Vac

example composition code PT MELT55 BO GR E27

Available colours



FC

Light patterns outside / white inside

FS

Dark patterns outside/ white inside

BA

Light patterns outside/ silver inside

BO

Light patterns outside / gold inside

NA

Dark patterns outside / silver inside

NE

Dark patterns outside / gold inside

EELc (Energy Efficiency Label compatibility): E, D, C, B, A, A+, A++

PTMELT55 _ _ GRE27

CUSTOMER _____

NOTES _____

NOTICE: Luminous flux (lm) and efficacy (lm/W) for all integrated LED luminaires is estimated based on nominal ratings of the LED sources. Technical data could be subject to alteration without notice. Axo Light does not provide legal guarantee for the accuracy of this data sheet.