



PLSK1502
Design by Manuel Vivian

Collection of ceiling, suspended and table lamps in flame-retardant TREVIRA®CS fabric (100% polyester Glow wire 960 °C), available in several sizes and colours. The fabric can also come in a double-layer version with an exterior black net fabric. A decorative inner lampshade (also printable with customized graphic) is available.

- Ratings
- E27
 - Downlight
 - Surface installation over holes
 - Supply voltage ~220-240V
 - Switch mode: on-off
 - Steel frame, painted
 - Cone in pongé fabric and light covering in jersey

Typology: CEILING LAMP

Product code composition

SKIRT / diffuser INCLUDED

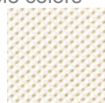
Type	Article	Exterior Net	Fabric Colours	Source
PL	SK 150 2 E27	NE black net	BC white	E27 4 x Max 16W LED or 4 x Max 23W fluo or 4 x Max 70W halo
		XX no black net	AR orange	
			AZ light blue	
			BL blue	
			FU fuchsia	
			GR light grey	
			MA brown	
			RS red	
			VE light green	



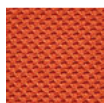
example composition code | PL | SK1502E27 | NE | MA |

For optional accessories please refer to our pricelist, website or contact our representatives

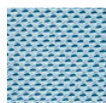
Available colors



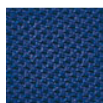
BC White



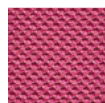
AR Orange



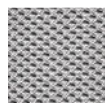
AZ Light blue



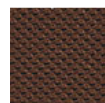
BL Blue



FU Fuchsia



GR Light grey



MA Brown



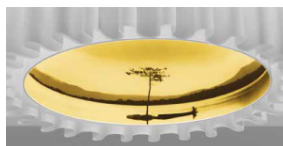
RS Red



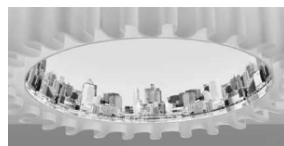
VE Light green



Black net over a white fabric NEBC



Optional inner decorative Lampshade "Nature graphic"



Optional inner decorative Lampshade "Urban graphic"



Optional inner decorative Lampshade "Flowers graphic"

EELc (Energy Efficiency Label compatibility): E, D, C, B, A, A+

PLSK1502E27_ _ _ _

CUSTOMER _____

NOTES _____

NOTICE:
Luminous flux (lm) and efficacy (lm/W) for all LED luminaires is estimated based on nominal ratings of the LED sources.
Technical data could be subject to alteration without notice. Axo Light does not provide legal guarantee for the accuracy of this data sheet.