

CRISTALIS A1

Design by: m_p studio

MASIERO



Struttura in metallo in finitura oro opaco con bracci decorati da sfere in cristallo. Paralumi in tessuto satin.

Metal frame in opaque gold finishing with crystal spheres garnished arms. Satin's textile lampshades.

Metallstruktur aus brüniertes Gold, Armen verziert mit Kristallkugeln. Satin Lampenschirmen.

Structure métallique finition or mat avec bras décorés avec sphères en cristal. Abat-jours de satin.


Металлическая структура в матовом золоте, рожки украшены стеклянными хрустальными шарами. Абажуры из ткани SATIN.

CE 

H 45 cm / 17.72"

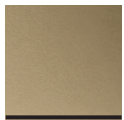
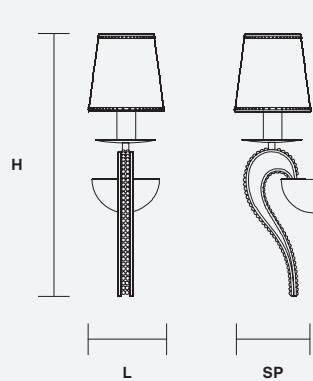
L 14 cm / 5.51"

SP 15 cm / 5.91"

 1×E14×40 W*

USA 1×E12×40 W*
(not included)

* Candle shape necessary for lampshades



V99