



OLIVIA _ Applique con struttura in fusione di ottone finitura Bronzata (Sx), Annerita (centro) o in finitura Nero lucido Olivia (Dx), rifinite a mano. | Sconce with structure in cast brass Bronzed finish (on the left), Blackened (central) or Olivia polished black finish (on the right), refined by hand.



OLIVIA _ Dettaglio in cristallo. | Crystal detail.



OLIVIA _ Dettaglio struttura in fusione di ottone finitura Annerita, rifinita a mano. Structure detail in cast brass, Blackened finish refined by hand.



OLIVIA _ Ambientazione | Room setting.

OLIVIA

Applique. Struttura in fusione di ottone finitura Bronzata, Annerita o in finitura Nero lucido Olivia, rifinite a mano.
Illuminazione a led.

Note:
220W-led light 5,5w
110w - led light 5,5w

Sconce. Structure in cast brass Bronzed finish, Blackened or Olivia polished black finish (refined by hand).
Led lights included.

Notes:
220W-led light 5,5w
110w - led light 5,5w

L-31-A

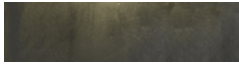


Misure | Size
17.6x14.1x H 37cm
(7'x5.6'x H 14.6')

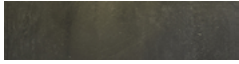
FINITURE STANDARD | STANDARD FINISHES



Fusione di ottone, finitura bronzata
Cast brass, bronzed finish



Fusione di ottone, finitura Annerita
Cast brass, blackened finish



Fusione di ottone, finitura Nero lucido Olivia
Cast brass, Olivia polished black