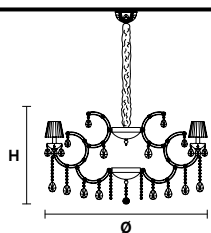


Design by: Masiero Lab



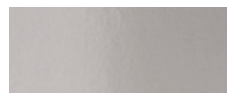
Standard chain	MT/CG	CE	RW/DW	CE
	<p><b>MT</b> Traditional version</p>	<p><b>CG</b> Coloured glass version</p>		<p><b>RW</b> RGB-W Led version</p>
	<p><b>LIGHTING</b> Traditional E14 lightbulbs</p> <p><b>SIZE</b> With lampshades, overall diameter is 5 cm (2") larger than specified</p> <p><b>FRAME</b> <b>MT</b> Chrome or gold plated metal covered with transparent glass <b>CG</b> Painted metal covered with painted glass</p> <p><b>LAMP SHADES</b> <b>MT</b> Organza ORG/14/AMB <b>CG</b> Organza ORG/14/...COLOUR</p> <p><b>PENDANTS</b> <b>MT</b> Transparent glass or crystal <b>CG</b> Coloured glass</p>			<p><b>DW</b> Dynamic White Led version</p> <p><b>LIGHTING</b> WHITE LED sources CRI&gt;90 <b>RGB-W</b> each light 330 Nominal lm at 3000K <b>DW</b> each light 490 Nominal lm at 4700K</p> <p><b>SIZE</b> Same size as MT or CG</p> <p><b>FRAME</b> Chrome or gold plated metal covered with transparent glass</p> <p><b>LAMP SHADES</b> No lampshades included</p> <p><b>PENDANTS</b> transparent glass or crystal</p>

### VE 984/12



TECHNICAL INFORMATIONS	LIGHTING SYSTEM	VERSION
<p>Ø 106 cm / 41.73"</p> <p>H 70 cm / 27.55"</p> <p>W 18 kg / 39.68 lb</p>	<p>12×E14×40 W max (not included). Triac Dimmable</p>	<b>VE 984/12 MT-CG</b>
	<p>12×LED source - 48 W tot Control system: DMX On request Radio Control and Masiero Smart Light App only for RW version.</p>	<b>VE 984/12 RW/DW</b>

#### MT TRADITIONAL



G04 Shiny chrome



G03 Shiny gold

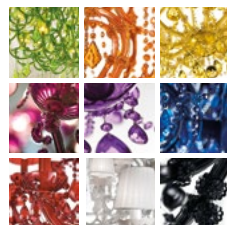
#### MT DYNAMIC WHITE



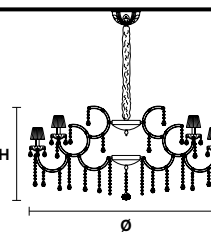
#### MT RGB - W - LED



#### MT COLOURED GLASS

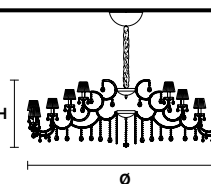


### VE 984/24



TECHNICAL INFORMATIONS	LIGHTING SYSTEM	VERSION
<p>Ø 140 cm / 55.11"</p> <p>H 70 cm / 27.55"</p> <p>W 37 kg / 81.57 lb</p>	<p>24×E14×40 W max (not included). Triac Dimmable</p>	<b>VE 984/24 MT-CG</b>
	<p>24×LED source - 96 W tot Control system: DMX On request Radio Control and Masiero Smart Light App only for RW version.</p>	<b>VE 984/24 RW/DW</b>

### VE 984/60



TECHNICAL INFORMATIONS	LIGHTING SYSTEM	VERSION
<p>Ø 220 cm / 86.61"</p> <p>H 75 cm / 29.52"</p> <p>W 69 kg / 152.11 lb</p>	<p>60×E14×40 W max (not included). Triac Dimmable</p>	<b>VE 984/60 MT-CG</b>
	<p>60×LED source - 240 W tot Control system: DMX On request Radio Control and Masiero Smart Light App only for RW version.</p>	<b>VE 984/60 RW/DW</b>

: for the US market, refer to the relevant price list.