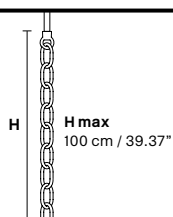


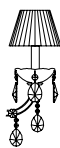
Design by: Masiero Lab



### Standard chain



### MT/CG



**MT**  
Traditional version  
**CG**  
Coloured glass version

**LIGHTING** Traditional E14 lightbulbs  
**SIZE** With lampshades, overall diameter is 5 cm (2") larger than specified  
**FRAME** **MT** Chrome or gold plated metal covered with transparent glass  
**CG** Painted metal covered with painted glass  
**LAMP SHADES** **MT** Organza ORG/14/RD  
**CG** Organza ORG/14/...COLOUR  
**PENDANTS** **MT** Transparent glass or crystal  
**CG** Coloured glass

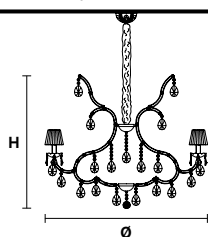
### CE RW/DW



**RW**  
RGB-W Led version  
**DW**  
Dynamic White Led version

**LIGHTING** WHITE LED sources CRI>90  
**RGB-W** each light 330 Nominal lm at 3000K  
**DW** each light 490 Nominal lm at 4700K  
**SIZE** Same size as MT or CG  
**FRAME** Chrome or gold plated metal covered with transparent glass  
**LAMP SHADES** No lampshades included  
**PENDANTS** transparent glass or crystal

### VE 959/12



**TECHNICAL INFORMATION**  
**Ø** 115 cm / 45.27"  
**H** 95 cm / 37.40"  
**W** 30 kg / 66.13 lb

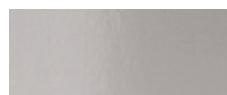
**LIGHTING SYSTEM**  
12×E14×40 W max (not included).  
Triac Dimmable

**VERSION**  
**VE 959/12 MT - CG**

12×LED source - 48 W tot  
Control system: DMX  
On request Radio Control and Masiero Smart Light App only for RW version.

**VE 959/12 RW/DW**

#### MT TRADITIONAL

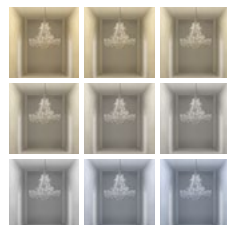


G04 Shiny chrome



G03 Shiny gold

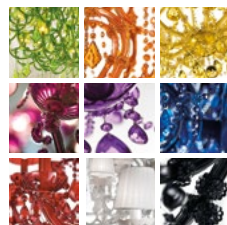
#### MT DYNAMIC WHITE



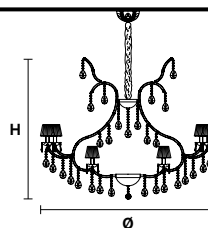
#### MT RGB - W - LED



#### MT COLOURED GLASS



### VE 959/30



**TECHNICAL INFORMATION**  
**Ø** 155 cm / 61.02"  
**H** 125 cm / 49.21"  
**W** 48 kg / 105.82 lb

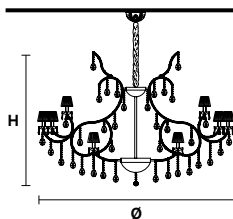
**LIGHTING SYSTEM**  
30×E14×40 W max (not included).  
Triac Dimmable

**VERSION**  
**VE 959/30 MT - CG**

30×LED source - 120 W tot  
Control system: DMX  
On request Radio Control and Masiero Smart Light App only for RW version.

**VE 959/30 RW/DW**

### VE 959/56



**TECHNICAL INFORMATION**  
**Ø** 200 cm / 78.74"  
**H** 140 cm / 55.11"  
**W** 84 kg / 185.18 lb

**LIGHTING SYSTEM**  
56×E14×40 W max (not included).  
Triac Dimmable

**VERSION**  
**VE 959/56 MT - CG**

56×LED source - 224 W tot  
Control system: DMX  
On request Radio Control and Masiero Smart Light App only for RW version.

**VE 959/56 RW/DW**