

 ARMANI / CASA



HYADES
Table Lamp

HYADES

DESCRIPTION

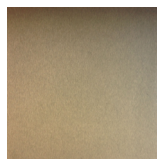
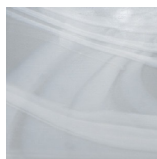
Hyades is inspired by the shape of the classical lanterns from the Far East and it is completely hand made following the ancient techniques of Murano glassmaking. The glass shade is produced by a traditional process in the furnace, where a series of coloured glass rods are fused on a mass that is superimposed on an internallayer of white opal glass in order to create a series of veins similar to those of marble. After the tempering process the glass it is passed by a band to obtain the matt finish. Like all Armani/Casa lamps, Hyades requires a power supply box (to be bought separately) to work.

MADE IN ITALY

DIMENSIONS

Ø 36 x 49 h cm - Inch Ø 14.2 x 19.3 h

FINISHES



Dove Grey Murano Glass /
Smoked Gold

TECHNICAL INFORMATION

Base and Lampshade
Murano blown glass.

Inner components
Steel.

Lighting system
LED.

Power supply box
Input: 100-240V ~ 0.7A, 50-60HZ
For indoor use only.

Maintenance and disposal

Product designed for indoor use. Make sure that the surface does not stay in contact with water or other liquids, even for short periods. The product is made with finishes subject to deterioration if treated with unsuitable substances. Always use neutral and creamy cleaning solutions without alcohol or acids. Never use steel wool or abrasive sponges but a soft wet cloth. Dry thoroughly after each cleaning. The replacement of damaged parts must be done only with original pieces: in this case, please contact an official Armani/Casa dealer for assistance. At the end of its useful life, the product must be returned to an authorized collection center for disposal.