

Fila lamp L
by Michel Charlot

kettal

Fila lamp L

Designer
Michel Charlot

Collection
Objects

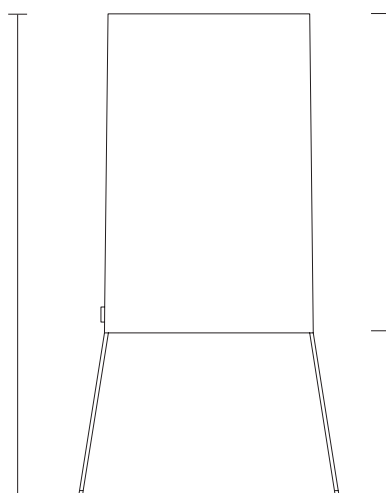
Reference
KS5701300

1/3

Because spaces come to life through the objects that adorn them, Kettal has developed a range of exterior decoration and design products.

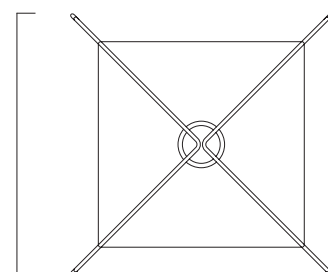
cm/inch

75,5/29,7



50/19,68

41/16,1



cm/inch

41/16,1



kettal

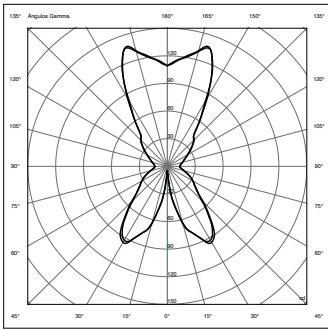
Fila lamp L

Designer
Michel Charlot

Collection
Objects

Reference
KS5701300

2/3



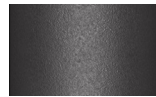
UL compliance certificate
on all internal electrical
components.

Light Bulb

E27 Max15W led bulb
temperatura de color
recomendable 2700K

Legs Colour Options

Terrain Coatings



Slate Stone
01C



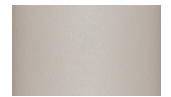
Mysty Smoke
02C



Ash
03C



Bone
04C



Tuff
05C



Wet Stone
06C



Sand Dune
07C



Dry Clay
08C



Arabica
09C



Sepia
19C



Rose Canyon
16C



Blossom
20C



Ruby Dust
18C



Sunset Glow
17C



Terrarosa
15C



Terracota
14C



Amber
13C



Ginger Root
12C



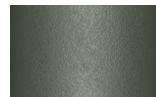
Desert Storm
11C



African Savannah
10C



Spring Meadow
28C



Kombu
29C



Forest Stream
27C



Sea Moss
26C



Glacier Ice
25C



Polar Sky
24C



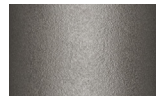
Nightfall
23C



Indigo
22C



Wild Lupin
21C



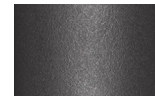
Galena
33C



Bronze
30C



Corten
31C



Manganese
32C

Fila lamp L

Designer
Michel Charlot

Collection
Objects

Reference
KS5701300

3/3

Materials

Aluminium
Antioxy, Heavy Load, Resistant
En-1421, Kettalize-It, An-
ti-Scratch, Easy Clean,
Flame Retardant M1, Eco Friendly
Ecoembes Recycling Process

Maintenance

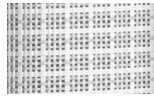
Clean with mild soap using
sponge or cloth. Be gentle
while cleaning, do not scrub
aggressively the fabric. Once
cleaned please make sure you
remove soap excess.

In case of aggressive stains
clean with diluted household
bleach.

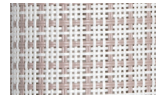
Clean stains promptly. The
longer it remains, more difficult
will be to remove.

Once cleaned the fabric steam
iron the fabric. Just use steam,
be carefull NOT placing the
iron directly in the fabric it will
get damage.

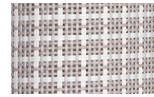
Fabric Options



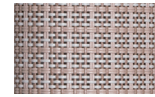
White Anemone
527



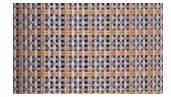
Lace Coral
528



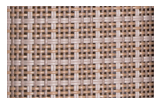
Padina
564



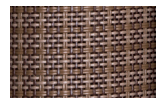
Saline
571



Alaria
572



Sponge
536



Fucus
537



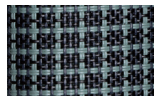
Urchin
547



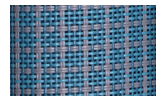
Kelp
556



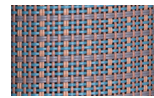
Turtle Grass
553



Deep Ocean
570



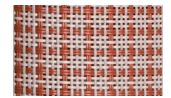
Winter Sea
569



Xenia
568



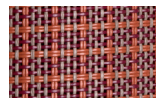
Plumaria
567



Irish Moss
559



Coral
562



Dulse
565