

Fila floor lamp XL
by Michel Charlot

kettal

Fila floor lamp XL

Designer
Michel Charlot

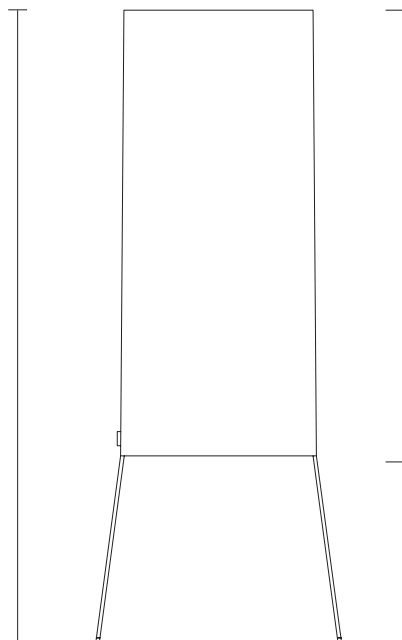
Collection
Objects

Reference
KS5701200

1/3

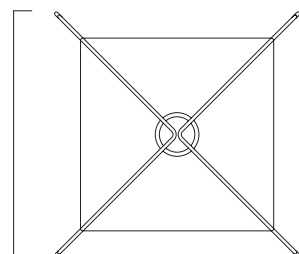
cm/inch

135/53,1



Ø94/37

52/20,4



cm/inch

52/20,4

Because spaces come to life through the objects that adorn them, Kettal has developed a range of exterior decoration and design products.



kettal

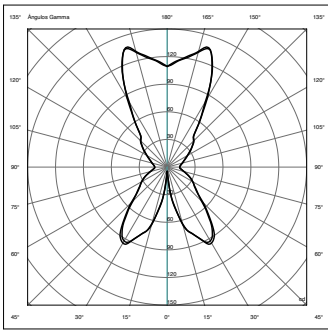
Fila floor lamp XL

Designer
Michel Charlot

Collection
Objects

Reference
KS5701200

2/3



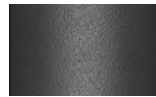
UL compliance certificate on all internal electrical components.

Light Bulb

E27 Max15W led bulb
temperatura de color
recomendable 2700K

Legs Colour Options

Terrain Coatings



Slate Stone
01C



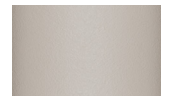
Mysty Smoke
02C



Ash
03C



Bone
04C



Tuff
05C



Wet Stone
06C



Sand Dune
07C



Dry Clay
08C



Arabica
09C



Sepia
19C



Rose Canyon
16C



Blossom
20C



Ruby Dust
18C



Sunset Glow
17C



Terrarosa
15C



Terracota
14C



Amber
13C



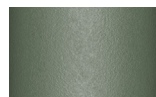
Ginger Root
12C



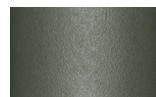
Desert Storm
11C



African Savannah
10C



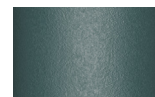
Spring Meadow
28C



Kombu
29C



Forest Stream
27C



Sea Moss
26C



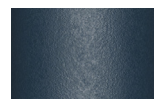
Glacier Ice
25C



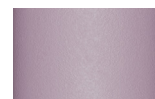
Polar Sky
24C



Nightfall
23C



Indigo
22C



Wild Lupin
21C



Galena
33C



Bronze
30C



Corten
31C



Manganese
32C

Fila floor lamp XL

Designer
Michel Charlot

Collection
Objects

Reference
KS5701200

3/3

Materials

Aluminium
Antioxy, Heavy Load, Resistant
En-1421, Kettalize-It, Anti-Scratch, Easy Clean,
Flame Retardant M1, Eco Friendly
Ecoembes Recycling Process

Maintenance

Clean with mild soap using sponge or cloth. Be gentle while cleaning, do not scrub aggressively the fabric. Once cleaned please make sure you remove soap excess.

In case of aggressive stains clean with diluted household bleach.

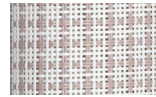
Clean stains promptly. The longer it remains, more difficult will be to remove.

Once cleaned the fabric steam iron the fabric. Just use steam, be carefull NOT placing the iron directly in the fabric it will get damage.

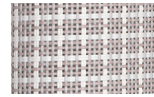
Fabric Options



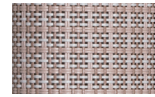
White Anemone
527



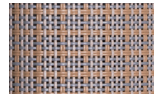
Lace Coral
528



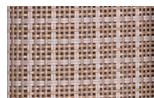
Padina
564



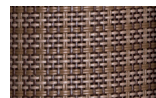
Saline
571



Alaria
572



Sponge
536



Fucus
537



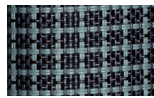
Urchin
547



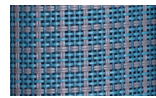
Kelp
556



Turtle Grass
553



Deep Ocean
570



Winter Sea
569



Xenia
568



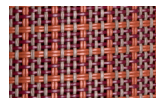
Plumaria
567



Irish Moss
559



Coral
562



Dulse
565