



**PTPLU180**

Design by Vanessa Vivian

Collection consisting of suspended lamps and floor lamps with white metal frame and fabric diffusers covered with flame-retardant TREVIRA® CS. Available in several colours and sizes. Screw fitting light source.

Typology: FLOOR LAMP

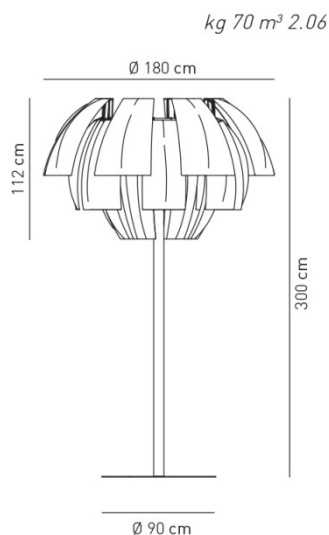
**Ratings**

- E27
- Diffused light
- Floor standing
- Supply voltage ~220-240V
- Switch mode: on-off, with dimmer
- Steel frame

**Product code composition**

**PLUMAGE**

Type	Article	Colours	Finish	Source
PT	PLU 180 E27	BC white	XX	E27 6 x Max 70W halo
		AR orange		
		FU fuchsia		
		GR light grey		
		MA brown		
		RS red		
		VE light green		
		MC multi-color		



**Fireproof class**  
 I= C1, GB= CRIB 5, D= B1, F= M1  
 EN= 1021/1-2, IMO A 652  
 Weight 340 ± 5% gr/m²  
**Abrasion Resistance (Martindale):**  
 40.000 ± 10% rubs  
**Pilling grade 5**  
**Light fastness grade 6**

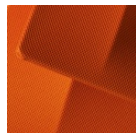


example composition code |PT |PLU180E27 |RS |XX

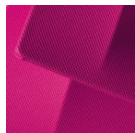
**Available colors**



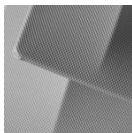
BC  
White



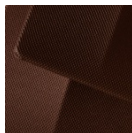
AR  
Orange



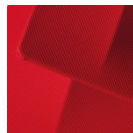
FU  
Fuchsia



GR  
Light grey



MA  
Brown



RS  
Red



VE  
Light green



MC  
Multicolor

EELc (Energy Efficiency Label compatibility): E, D, C, B, A, A+, A++

PTPLU180E27\_\_XX

CUSTOMER

NOTES

Luminous flux (lm) and efficacy (lm/W) for all built-in LED luminaires is estimated based on nominal ratings of the LED sources. Technical data could be subject to alteration without notice. Axo Light does not provide legal guarantee for the accuracy of this data sheet.