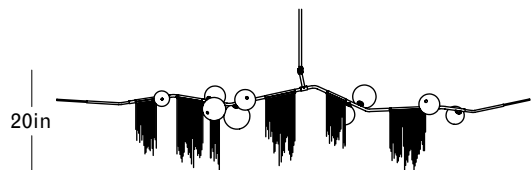




Oil Rubbed Bronze With Gunmetal Fringe  
White Glass

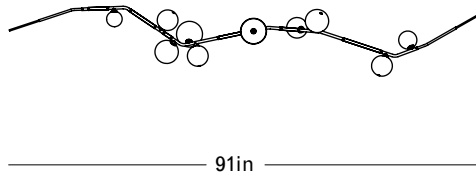
Front



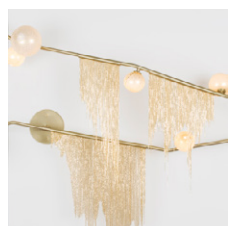
Side



Top



Finishes



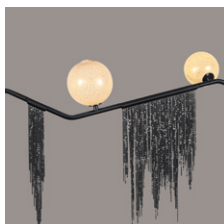
Brushed Brass with 18k Gold Fringe



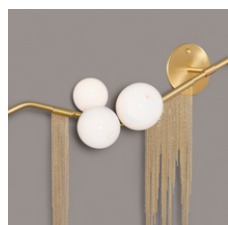
Satin Nickel with Polished Nickel Fringe



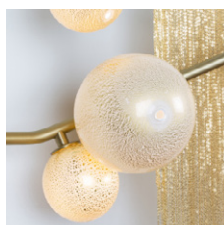
Vintage Brass with 18k Gold Fringe



Oil Rubbed Bronze with Gunmetal Fringe



White Glass



White Glass with 24k Gold Foil

Specifications

Height: 20in / 50cm  
 Depth: 14in / 36cm  
 Width: 91in / 231cm  
 Weight: 27lb / 12kg  
 Max Wattage: 18w  
 Minimum Drop: 24in / 60cm

Suspension: Ships with 36in or 72in stem cut to length on site  
 Canopy: Ø5in x 1.5in with hang straight  
 Materials: Machined brass, glass  
 Bulbs: 12v / G4 / 1.2w / 2700k / dimmable LED, transformer provided



UL, cUL (120V) Certified

Inspiration

The Cherry Bomb collection, which debuted in 2014, was born of Lindsey's long-time obsession with the ephemerality of the spring-blossoming Japanese trees that line grand boulevards throughout the world. She has always been captivated by the achingly beautiful contrast between the short-lived whisper-pink flowers and the trees' dark gnarled limbs, which seem to have a profound story to tell.