

ATELIER ARETI

PRODUCT

Disc and sphere glass 514
Ceiling light / Long

MATERIALS AND COLOUR OPTIONS

Brushed brass; coloured glass; white glass

VERSIONS

Brushed brass structure 514OL-C01-BR01

TECHNICAL DETAILS

9 x G9 LED 5W max

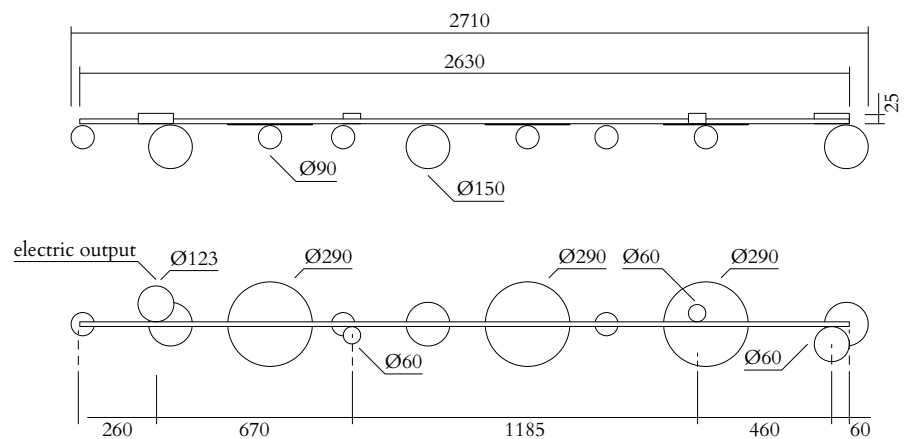
110-230V

IP20

Lights bulbs not included

MADE IN

Germany



Sizes in mm. Flat attachments available under request. Variations in colour and size are available for some collections, please contact Areti for more details.

Our collections are hand made and made to order, small irregularities in shape or surface will occur, they are inherent to the hand made process and should not be seen as flaws. For detailed information on any products: contact@atelierareti.com

ATELIER ARETI

PRODUCT

Disc and sphere glass 514
Ceiling light / Medium

MATERIALS AND COLOUR OPTIONS

Brushed brass; coloured glass; white glass

VERSIONS

Brushed brass structure 514OL-C02-BR01

TECHNICAL DETAILS

2 x G9 LED 5W max

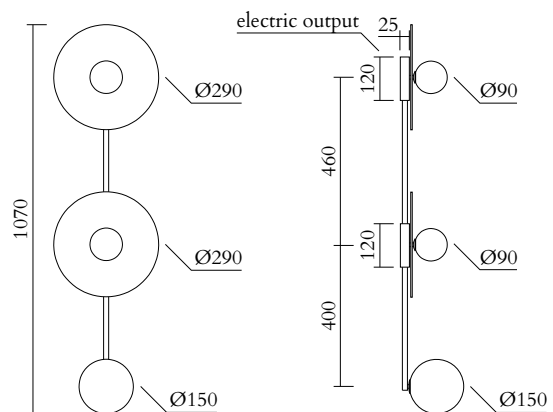
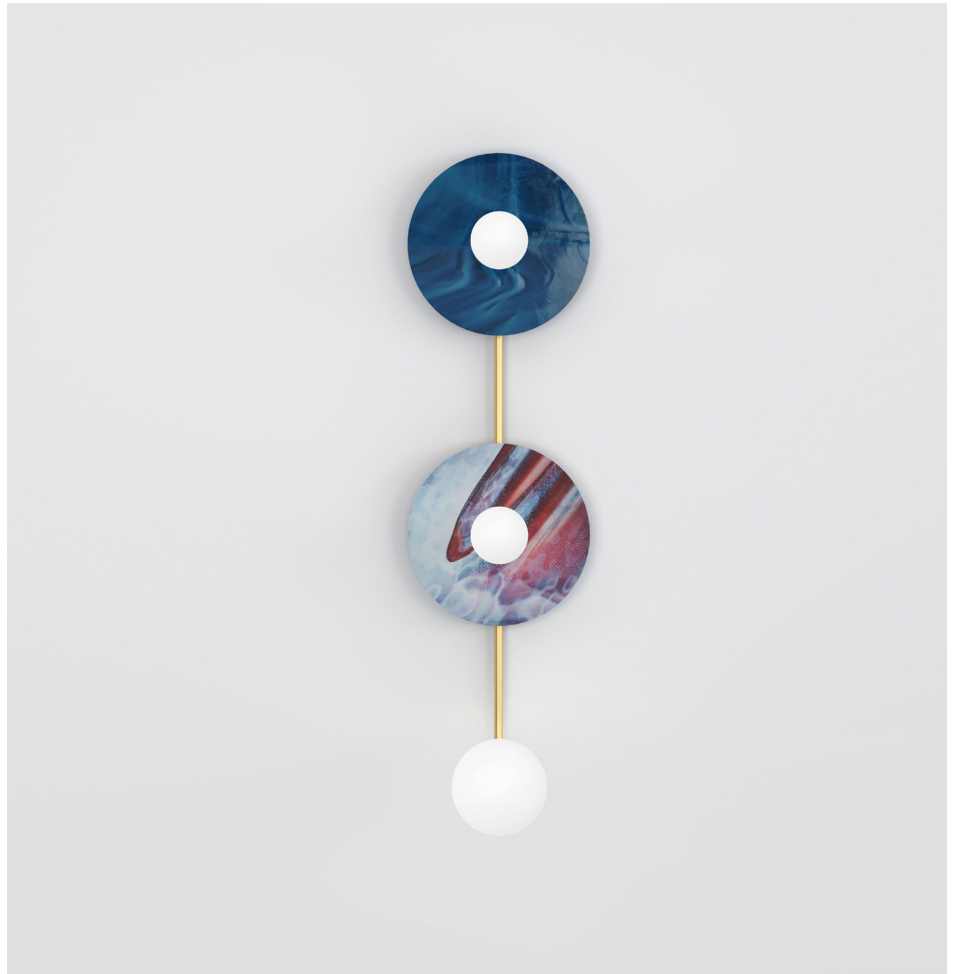
110-230V

IP20

Lights bulbs not included

MADE IN

Germany



Sizes in mm. Flat attachments available under request. Variations in colour and size are available for some collections, please contact Areti for more details.

Our collections are hand made and made to order, small irregularities in shape or surface will occur, they are inherent to the hand made process and should not be seen as flaws. For detailed information on any products: contact@atelierareti.com

ATELIER ARETI

PRODUCT

Disc and sphere glass 514
Ceiling light / Short

MATERIALS AND COLOUR OPTIONS

Brushed brass; coloured glass; white glass

VERSIONS

Brushed brass structure 514OL-C03-BR01

TECHNICAL DETAILS

2 x G9 LED 5W max

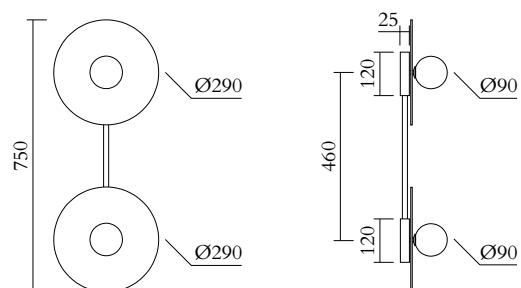
110-230V

IP20

Lights bulbs not included

MADE IN

Germany



Sizes in mm. Flat attachments available under request. Variations in colour and size are available for some collections, please contact Areti for more details.

Our collections are hand made and made to order, small irregularities in shape or surface will occur, they are inherent to the hand made process and should not be seen as flaws. For detailed information on any products: contact@atelierareti.com