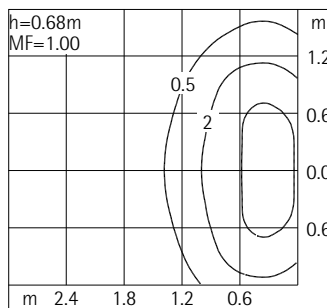
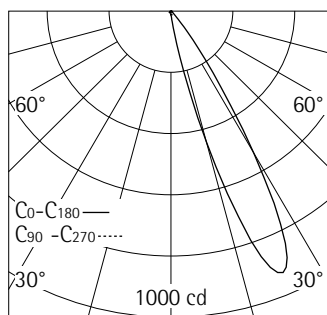


33267.000 Graphit m
LED module: 2.9W 391lm 3000K warm white
Switchable
Version 10
Wide beam

Product description

For mounting on accessories.
Bollard: corrosion-resistant aluminium profile, No-Rinse surface treatment. Double powder-coated. Optimised surface for reduced accumulation of dirt.
Luminaire housing and base plate: corrosion-resistant cast aluminium, No-Rinse surface treatment. Double powder-coated. Base plate for mounting on ground socket, concrete anchor or mounting plate.
2 screwed cable glands M20.
Through-wiring possible. 3-pole terminal block.
Control gear.
LED module: high-power LEDs.
Collimating lens made of optical polymer.

Softec lens as safety glass.
Monteringstillbehör beställs separat.
Mark-washer och pollare måste monteras på plats.
Protection mode IP65: dust-proof and water jet-proof.
Maximum wind load area 0.1m²
Weight 3.91kg
Version with 3000K CRI 97 or 2700K, 3500K, 4000K CRI 92 available on request.



Technical data

| | |
|---|---------------------------------|
| Luminous flux of the luminaire | 286lm |
| Connected load | 4.4W |
| Luminaire efficacy | 65lm/W |
| Colour deviation | 1.5 SDCM |
| Colour rendition index | CRI 92 |
| Lumen maintenance (LED manufacturer specifications) | L90/B10 ≤50000h L90 ≤100000h |
| LED failure rate | 0.1% ≤50000h |
| Dimming range | -- |
| Dimming method | -- |
| TLA (Temporal Light Artefacts) | SVM ≤ 0.4; PstLM ≤ 1 |
| LMF | F |
| Standby power per control gear | -- |
| Luminaires per circuit breaker B16 | 50 |

For your regional contact in the ERCO
Sales network click here
www.erco.com/contact

Technical Region: 220-240V 50/60Hz
We reserve the right to make technical and design changes.
Edition: 08.05.2024
Current version under
www.erco.com/33267.000

Planning data

Melanopic light effect

| | | | |
|--------------------|--------------|------|------|
| Art. no. | Spectrum | MR | MDER |
| 33267.000 (direct) | 3000K CRI 92 | 0.53 | 0.48 |

| | |
|------|--|
| MR | Melanopic factor (of luminous radiation) $a_{mel,v}$ |
| MDER | Melanopic Daylight Efficacy Ratio $[\gamma]_{mel,v,D65}$ |

Multiplying the illuminance with the melanopic daylight efficacy ratio MDER gives the melanopic equivalent daylight illuminance MEDl. (MEDl Melanopic Equivalent Daylight Illuminance $[lx] E_{v,mel,D65} [lx]$).

| | | | | | | | | | | | | |
|--------------------|------|------|------|------|------|------|------|------|------|------|------|------|
| Cleaning (a) | 1 | | | | 2 | | | | 3 | | | |
| Ambient conditions | P | C | N | D | P | C | N | D | P | C | N | D |
| LMF | 0.93 | 0.86 | 0.81 | 0.74 | 0.88 | 0.77 | 0.66 | 0.57 | 0.85 | 0.70 | 0.55 | 0.45 |

| | | | | | | | |
|------------------------|------|------|-------|-------|-------|-------|-------|
| Hours of operation (h) | 1000 | 5000 | 10000 | 20000 | 30000 | 40000 | 50000 |
| LLMF | 1.00 | 0.99 | 0.98 | 0.96 | 0.94 | 0.92 | 0.90 |
| LSF | 1 | 1 | 1 | 1 | 1 | 1 | 1 |

| | |
|------|--------------------------------|
| MF | LMFxLLMFxLSF |
| MF | Maintenance Factor |
| LMF | Luminaire Maintenance Factor |
| LLMF | Lamp Lumens Maintenance Factor |
| LSF | Lamp Survival Factor |
| P | Room pure |
| C | Room clean |
| N | Room normal |
| D | Room dirty |

Data according to regulations

2019/2020/EU supplemented by 2021/341/EU and 2019/2015/EU supplemented by 2021/340/EU Energy Consumption Labelling Ordinance

This product contains a light source of efficiency class E
Due to thermal and photometric properties as well as to protect electronic components from ESD (electrostatic discharge) the light source cannot be changed by the customer.

ID EPREL: 1708741
Model identifier: 3000068230
Download data sheets for control gear and disassembly instructions at www.erco.com/slr

Technical data in accordance with international norms and standards

| | |
|-----------|---|
| IEC 60598 | Luminaires – Part 1+2: general requirements, specific requirements and tests |
| IEC 62031 | LED modules for general lighting – safety requirements |
| IEC 62471 | Photobiological safety of lamps and lamp systems |
| EN13032-4 | Light and lighting – measurement and representation of photometric data |
| CIE 13 | Method of measuring and specifying colour rendering properties of light sources |

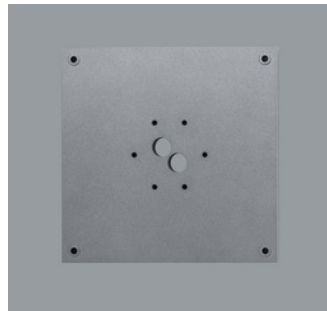
All technical data is subject to industry-standard tolerances.
Also see www.erco.com/erco-led

For explanations of the symbols and abbreviations used and other general information, see www.erco.com/symbols

Accessories



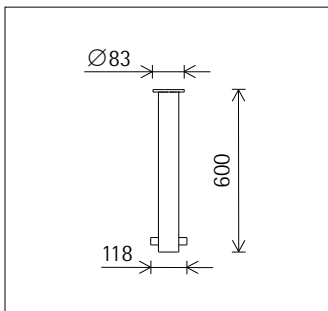
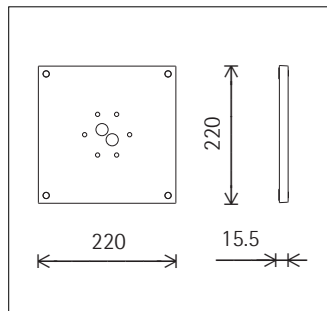
34974.000
Distribution box, IP68
With four cable entries, 7-25mm.
Polymer.
ø 102mm, L 305mm.
Weight 0.47kg
CE IP 68 3m



33983.000
Mounting plate
Corrosion-resistant cast aluminium,
No-Rinse surface treatment. Graphit m,
double powder-coated.
Weight 1.00kg



33975.000
Ground socket
Metal, hot-dip galvanised.
Weight 2.10kg



33979.000
Concrete anchor
Mounting plate with threaded bar and
fixing nuts M6. Individual parts to be
assembled on-site.
Weight 0.25kg

