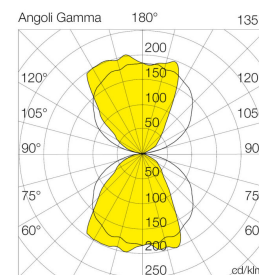
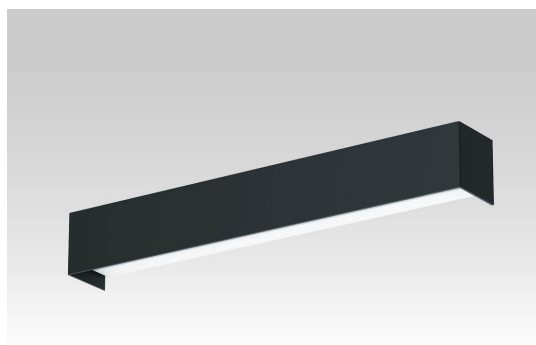


# DELIA/L6

2310L69428ND

**TEC-MAR**<sup>®</sup>  
L I G H T I N G



## SPECIFIC PRODUCT

<b>Mod</b>	L6
<b>Color</b>	Matt black
<b>Installation</b>	Led indoor light for wall installation
<b>Application</b>	Indoor
<b>Materials</b>	Steel sheet body, painted with embossed anti-yellowing epoxy-polyester powder, including phosphating and degreasing pretreatment
<b>Insulation class</b>	Class I
<b>Protection index</b>	IP20
<b>Impact degree</b>	IK07
<b>Ambient temperature (Ta)</b>	'-25 / 45 °C
<b>Optics</b>	White painted steel sheet reflector with PMMA high flux efficiency internal lens
<b>Power supply</b>	220-240Vac
<b>Frequency</b>	50/60Hz
<b>Led modules</b>	Removable (Class: D)
<b>Standard equipment</b>	- Inner driver.
<b>Luminous flux maintenance</b>	L80-B50 > 100.000 h L90-B10 > 60.000 h
<b>Wiring</b>	Removable
<b>Step Mac Adams</b>	3 step
<b>Photobiological safety class</b>	Risk exempt group
<b>Trademarks and certifications</b>	CE / UNI EN 60598-1
<b>Warranty</b>	7 years

## PRODUCT FEATURES

W tot.	mA	°K - CRI	Options	Lumen OUTPUT	Lm/W	A (mm)	B (mm)	C (mm)	D (mm)	Kg
28	-	4000°K - CRI>90	dali 2 / dali 2 push	2774	99	580	80	85	-	2.5



## RELATED ACCESSORIES

There are no accessories available for this product

**TEC-MAR**  
L I G H T I N G

TEC-MAR S.r.l. Via delle Industrie 1, 26835 Crespatica (LO) – Italy

TEC-MAR S.r.l. reserves the right, without notice, to modify the characteristics of its products as well as their availability at any time. All products, related technical data, illustrations and information are not binding for TEC-MAR S.r.l. TEC-MAR S.r.l. will not be liable for any illustrative, textual and/or translation errors. All values reported are measurement values. Flow, CCT and power data are within tolerances of +/- 10%.

29-02-2024