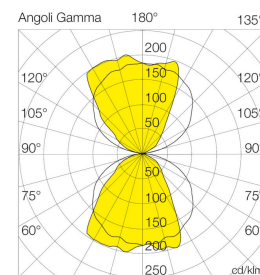
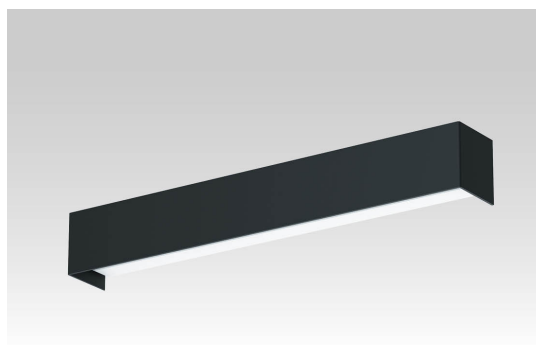


DELIA/L6

2310L63028ND

TEC-MAR[®]
L I G H T I N G



SPECIFIC PRODUCT

Mod	L6
Color	Matt black
Installation	Led indoor light for wall installation
Application	Indoor
Materials	Steel sheet body, painted with embossed anti-yellowing epoxy-polyester powder, including phosphating and degreasing pretreatment
Insulation class	Class I
Protection index	IP20
Impact degree	IK07
Ambient temperature (Ta)	'-25 / 45 °C
Optics	White painted steel sheet reflector with PMMA high flux efficiency internal lens
Power supply	220-240Vac
Frequency	50/60Hz
Led modules	Removable (Class: D)
Standard equipment	- Inner driver.
Luminous flux maintenance	L80-B50 > 100.000 h L90-B10 > 60.000 h
Wiring	Removable
Step Mac Adams	3 step
Photobiological safety class	Risk exempt group
Trademarks and certifications	CE / UNI EN 60598-1
Warranty	7 years

PRODUCT FEATURES

W tot.	mA	°K - CRI	Options	Lumen OUTPUT	Lm/W	A (mm)	B (mm)	C (mm)	D (mm)	Kg
28	-	3000°K - CRI>80	dali 2 / dali 2 push	3099	111	580	80	85	-	2.5



RELATED ACCESSORIES

There are no accessories available for this product

TEC-MAR
LIGHTING

TEC-MAR S.r.l. Via delle Industrie 1, 26835 Crespatica (LO) – Italy

TEC-MAR S.r.l. reserves the right, without notice, to modify the characteristics of its products as well as their availability at any time. All products, related technical data, illustrations and information are not binding for TEC-MAR S.r.l. TEC-MAR S.r.l. will not be liable for any illustrative, textual and/or translation errors. All values reported are measurement values. Flow, CCT and power data are within tolerances of +/- 10%.

29-02-2024