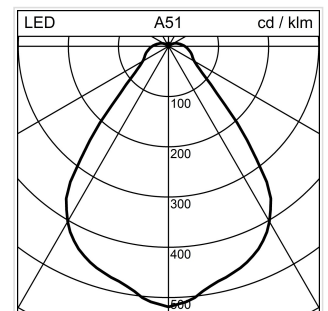
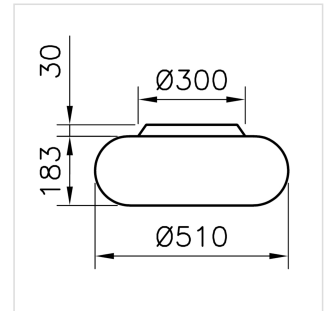


## Torus

### Ceiling mounted luminaire

2008.7974

TORUS CW510 LED3650-940 DID CAS



<b>System power</b>	36 W
<b>Light control</b>	Casambi
<b>Colour temperature</b>	4000 K neutral white
<b>Colour / Finish</b>	white
<b>Luminous flux of luminaire</b>	3650 lm
<b>Weight</b>	12.173 kg
<b>Colour consistency SDCM</b>	SDCM 3
<b>Unified Glare Rating (UGR)</b>	19
<b>C0</b>	
<b>Colour Rendering Index (CRI)</b>	CRI > 90
<b>Unified Glare Rating (UGR)</b>	19
<b>C90</b>	
<b>Maintained luminous flux</b>	L80 50'000 h

Ceiling mounted luminaire Torus with LED, system power: 36 W, standby power 1 W, luminous flux of luminaire 3650 lm, colour rendering index CRI > 90, colour temperature 4000 K, neutral white, colour tolerances SDCM 3, lifetime LED L80 50'000 h, photobiological safety: the luminaire poses no danger (RG0), 230 V, nominal current: 0.16 A, direct-indirect light emission, 92% / 8%, light fixture in polymethyl methacrylate (PMMA), transparent, inside cone white, RAL 9016, 2 integral control gears, Casambi,

protection class I, ingress protection IP40, glow wire test 650 °C, this product contains a light source of energy efficiency class B and EPREL registration number: 1542692

Ø = 510 mm, H = 183 mm

## Datasheet : Accessories

### Torus - Ceiling mounted luminaire

2008.7974

TORUS CW510 LED3650-940 DID CAS



#### 1022.0941

##### Casambi Switch

Control element Casambi Switch Casambi, white For wireless control of luminaires with Casambi modules, control of luminaires, groups, scenes, animations, dimming and changing the color temperature possible, set consisting of: Control element, mounting plate with magnets CRApp available for free download for iOS and Android devices L = 90 mm, B = 90 mm, T = 12 mm



#### 1022.0942

##### Casambi Switch

Control element Casambi Switch. black For wireless control of luminaires with Casambi modules, control of luminaires, groups, scenes, animations, dimming and changing the color temperature possible, set consisting of: Control element, mounting plate with magnets CRApp available for free download for iOS and Android devices L = 90 mm, B = 90 mm, T = 12 mm



#### 2004.9946

##### Control

Plug & Play Flex-Sensor black, 220-240 V, Casambi, controllable with Casambi, Bluetooth, 1.5m power supply cable with CEE 7/16 European plug, system power: 0.4 W, measuring range: 6 m, sensor angle: 100°, compatible with Casambi, ingress protection IP44 Ø = 40 mm, L = 60 mm



#### 2004.9947

##### Control

Plug & Play Flex-Sensor white, 220-240 V, Casambi, controllable with Casambi, Bluetooth, 1.5m power supply cable with CEE 7/16 European plug, system power: 0.4 W, measuring range: 6 m, sensor angle: 100°, compatible with Casambi, ingress protection IP44 Ø = 40 mm, L = 60 mm