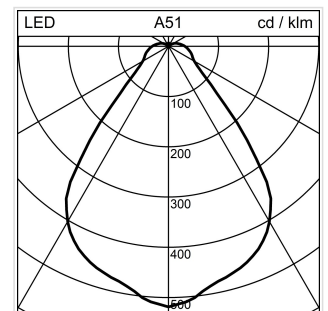
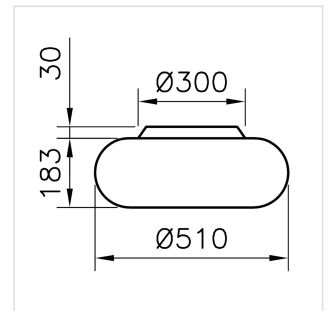


Torus

Ceiling mounted luminaire

2008.7973

TORUS CW510 LED3750-930 DID CAS



System power	38 W
Light control	Casambi
Colour temperature	3000 K warm white
Colour / Finish	white
Luminous flux of luminaire	3750 lm
Weight	12.171 kg
Colour consistency SDCM	SDCM 3
Unified Glare Rating (UGR)	19
C0	
Colour Rendering Index (CRI)	CRI > 90
Unified Glare Rating (UGR)	19
C90	
Maintained luminous flux	L80 50'000 h

Ceiling mounted luminaire Torus with LED, system power: 38 W, standby power 1 W, luminous flux of luminaire 3750 lm, colour rendering index CRI > 90, colour temperature 3000 K, warm white, colour tolerances SDCM 3, lifetime LED L80 50'000 h, photobiological safety: the luminaire poses no danger (RG0), 230 V, nominal current: 0.17 A, direct-indirect light emission, 92% / 8%, light fixture in polymethyl methacrylate (PMMA), transparent, inside cone white, RAL 9016, 2 integral control gears, Casambi,

protection class I, ingress protection IP40, glow wire test 650 °C, this product contains a light source of energy efficiency class B and EPREL registration number: 1542692

Ø = 510 mm, H = 183 mm

Datasheet : Accessories

Torus - Ceiling mounted luminaire

2008.7973

TORUS CW510 LED3750-930 DID CAS



1022.0941

Casambi Switch

Control element Casambi Switch Casambi, white For wireless control of luminaires with Casambi modules, control of luminaires, groups, scenes, animations, dimming and changing the color temperature possible, set consisting of: Control element, mounting plate with magnets CRApp available for free download for iOS and Android devices L = 90 mm, B = 90 mm, T = 12 mm



1022.0942

Casambi Switch

Control element Casambi Switch. black For wireless control of luminaires with Casambi modules, control of luminaires, groups, scenes, animations, dimming and changing the color temperature possible, set consisting of: Control element, mounting plate with magnets CRApp available for free download for iOS and Android devices L = 90 mm, B = 90 mm, T = 12 mm



2004.9946

Control

Plug & Play Flex-Sensor black, 220-240 V, Casambi, controllable with Casambi, Bluetooth, 1.5m power supply cable with CEE 7/16 European plug, system power: 0.4 W, measuring range: 6 m, sensor angle: 100°, compatible with Casambi, ingress protection IP44 Ø = 40 mm, L = 60 mm



2004.9947

Control

Plug & Play Flex-Sensor white, 220-240 V, Casambi, controllable with Casambi, Bluetooth, 1.5m power supply cable with CEE 7/16 European plug, system power: 0.4 W, measuring range: 6 m, sensor angle: 100°, compatible with Casambi, ingress protection IP44 Ø = 40 mm, L = 60 mm