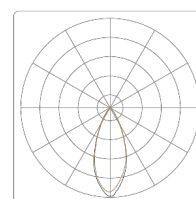
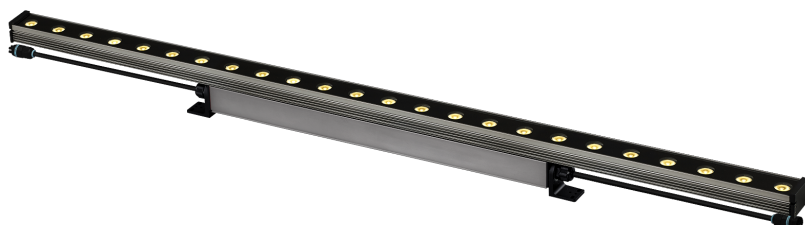
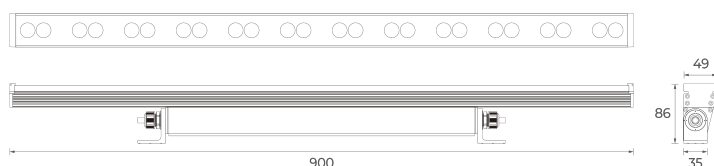


P1 /AC-B - 900 - TW - L40 - XXX - DMX/RDM



PHOTOMETRICS CURVE
40°



Technical Specifications

Order code	P1 /AC-B - 900 - TW - L40 - XXX - DMX/RDM
Voltage	220 - 240V AC
Wattage	46 W
Luminous flux of the luminaire	2790 lm
Dimension(mm)	L900 x W49 x H86
Weight	2.5 Kg
Technical region	185 - 265V AC (47 - 63Hz)
Operating Temperature	min -20°C, max 50°C
Storage Temperature	min -30°C, max 80°C
Light Distribution	40°
Color of light	2700K - 6500K
Color rendering index	80
Color deviation	3 step SDCM
LED Lifetime	L80 ≤ 90,700h (Ta 25°C)
Dimming control	DMX/RDM
Housing material	Extruded Al. / Tempered glass cover
Housing finish	Dark gray(Possible color customization)
Ingress protection	IP67

P1 is an extract of the ideas that the lighting designers wish for when they think over architectural lighting design. They might think: "It would be great if I can choose the type of power supply and lighting fixtures depending on the architecture environment." "It wouldn't be fantastic if just one button can get me another light distribution?" "I hope I can easily control the glare to prevent dazzle." These wishes inspired us to develop 'POWER LED BAR P1', which is the only product to satisfy the needs of both architectural design and performance.

Accessories

P1AFDC-1	P1 - A TYPE DMX/RDM(ON/OFF) FEED CABLE - 1M
P1AFDC-2	P1 - A TYPE DMX/RDM(ON/OFF) FEED CABLE - 2M
P1AFDC-3	P1 - A TYPE DMX/RDM(ON/OFF) FEED CABLE - 3M
P1AITC-1	P1 - A TYPE DMX/RDM(ON/OFF) INTER CABLE - 1M
P1AITC-2	P1 - A TYPE DMX/RDM(ON/OFF) INTER CABLE - 2M
P1AITC-3	P1 - A TYPE DMX/RDM(ON/OFF) INTER CABLE - 3M
P1AEDC	P1 - A TYPE DMX/RDM(ON/OFF) CABLE END CAP