

LUTTEROTH LED DB m600

1740 lm, 11 W, PC (fracture proof) clear-structured, asymmetric beam, SELV

Item Number: 729 280 64 92 - SG1

LED

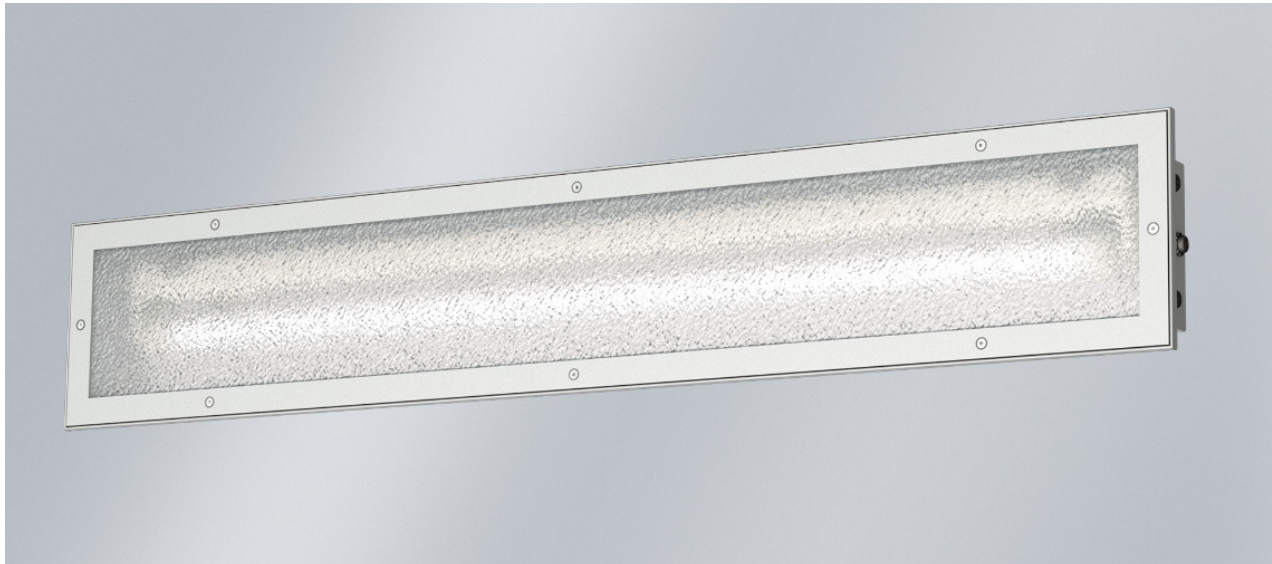
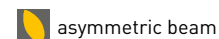
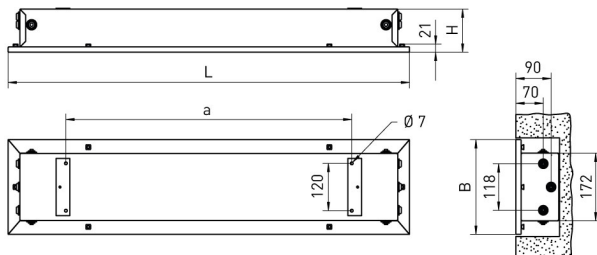


Illustration may differ



DIMENSIONS



L	760 mm
B	240 mm
H	112 mm
a	465 mm
b	120 mm
max. Weight	4,0 kg

DESCRIPTION

Extremely impact-resistant surfacemounted luminaire with LED. Vandalism-proof up to 150 joules. Useable in all areas at risk of deliberate or negligent destruction. Stainless steel installation housing, white colour finish on inside and outside, like RAL 9010. Useable for indoor and outdoor areas according to protection rating IP 65. Suitable for intensive cleaning processes using pressure washers due to high protection rating IP 69K. Short sealing system made of age resistant, form retaining silicone/synthetic rubber. Optimum colour rendering of red tones by special LED modules with an increased R9 value. Flat cover screen made from PC opal white (fracture proof) or PC clear (fracture proof) structured. Luminaire ready for mounting and installation. Two cable entries on face side [M20]. **DB (Deutsche Bahn) version.** Built-in driver with secondary safety extra low voltage according to DIN VDE 0100-410 (SELV). Optimised with additional inrush current limiter (ESSB II). 4 kV transient filter. 4 x 1.5 mm² through wiring. Single or row mounting. Fixing with four rear bores, flush on the rear recess wall. Fixing of the luminaire cover with stainless steel sealing screws with hexagon sockets.

NOTE DB (Deutsche Bahn) version:

Listed: DB InfraGO Personenbahnhöfe – Group 30.

DB (Deutsche Bahn) version: Optimum colour rendering of red tones by special LED modules with an increased R9 value. Built-in driver with **secondary safety extra low voltage according to DIN VDE 0100-410 (SELV)**. Optimised with additional inrush current limiter (ESSB II). 4 kV transient filter.

Listed: DB Station & Service - group 30

LUTTEROTH LED DB m600

1740 lm, 11 W, PC (fracture proof) clear-structured, asymmetric beam, SELV

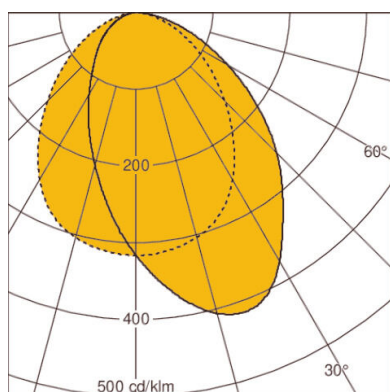
Item Number: 729 280 64 92 - SG1

CHARACTERISTICS

Version	m600	Housing material	stainless steel
Lamp	LED	Colour housing	White
Number of lamps	1-lamp	Cover	lamp cover
Luminous flux lamp	1740 lm	Material of the cover	PC (fracture proof) clear-structured
LOR	71 %	Light distribution	asymmetric beam
Luminous flux luminaire	1242 lm	Adjustability	not adjustable
max. System power	11 W	UGR Value (4H8H)*	21
Luminaire efficacy	112.9 lm/W	Protection class	II
Colour temperature	White, 940/4000 K, Ra > 90 R9 red saturated >46	IP-rating	IP65, IP69K
Colour consistency (McAdam ellipse)	SDCM3	Impact strength	> IK10
Lamp service life	L80 B10 > 60,000 h at +45°C	ENEC / VDE	Yes / Yes
Ambient temperature	-25°C to +45°C	Manufacturer warranty	5 years
Type of gear	Electronic transformer, No dim function, 230 V - 240 V AC/DC, 0/ 50/ 60 Hz	Installation type	recessed mounted, recessed mounting, single mounting, wall installation
EL (Emergency Lighting)	optional	Replaceability of control gear	control gear replaceable by professional
DC level set at factory	15 %	Replaceability of light unit	Reflector tube replaceable by professional
DC level programmable	1 % to 100 %		
Transient protection	4 kV		
Inrush Current Limiter	Yes		
Max. number of luminaires Circuit breaker B16	35		
Max. Number of luminaires Circuit breaker C16	60		
Through-wiring	4 x 1.5 mm ²		

* The above mentioned UGR is based on example calculations. The effective value can only be determined with a light calculation.

DIAGRAMS



LOR: 71,0%