

## BERLIN LED 100

1100 lm, 9 W, PC Tropol® (fracture proof), medium beam

Item Number: 421 100 34 03 - E

LED

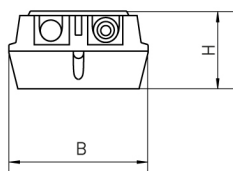
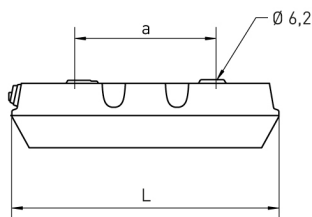


Illustration may differ

 easy eXchange

 medium beam

### DIMENSIONS



L	340 mm
B	155 mm
H	85 mm
a	180 mm
max. Weight	1,0 kg

### DESCRIPTION

Polymer luminaire for recessed and surface ceiling mounting with LED lamps. Useable in e.g. railway loop lines, section doors, storage rooms, cellars and technical side rooms. Suitable for cold areas down to -25 °C. Weather-proof and UV-resistant luminaire housing made of polymer, anthracite. Useable for indoor and outdoor areas according to protection rating IP 65. Sealing system made of age-resistant, form-retaining silicone/synthetic rubber. Detachable lamp diffuser made of PC Tropol® (fracture proof) with easy eXchange for LED and driver replacement. Luminaire ready for mounting and installation. Built-in driver 230 V AC/DC, optionally suitable for emergency lighting. One cable membrane M20. 2 kV transient filter. Single mounting. Ceiling or wall fixing with two concealed rear mounting apertures. Easy mounting due to modular construction.

### INFORMATION

- > BERLIN LED 50 replaces 11 W TC-SEL
- > BERLIN LED 100 replaces 18 W TC-L / TC-D

## BERLIN LED 100

1100 lm, 9 W, PC Tropol® (fracture proof), medium beam

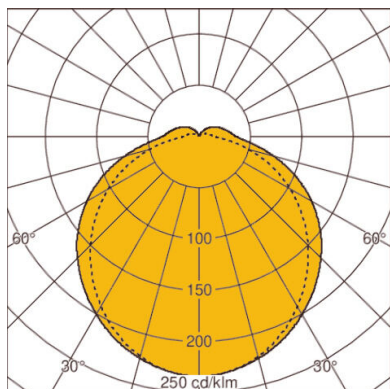
Item Number: 421 100 34 03 - E

### CHARACTERISTICS

<b>Version</b>	100	<b>Housing material</b>	polymer
<b>Lamp</b>	LED	<b>Colour housing</b>	Anthracite
<b>Number of lamps</b>	1-lamp	<b>Cover</b>	lamp cover
<b>Luminous flux lamp</b>	1100 lm	<b>Material of the cover</b>	PC Tropol® (fracture proof)
<b>LOR</b>	82 %	<b>Light distribution</b>	medium beam
<b>Luminous flux luminaire</b>	904 lm	<b>Adjustability</b>	not adjustable
<b>max. System power</b>	9 W	<b>UGR Value (4H8H)*</b>	21
<b>Luminaire efficacy</b>	100.4 lm/W	<b>Protection class</b>	II
<b>Colour temperature</b>	White, 840/4000 K, Ra > 80	<b>IP-rating</b>	IP65
<b>Colour consistency (McAdam ellipse)</b>	SDCM3	<b>Impact strength</b>	IK08
<b>Lamp service life</b>	L80 B10 > 60,000 h at +30°C	<b>ENEC / VDE</b>	Yes / Yes
<b>Ambient temperature</b>	-25°C to +30°C	<b>Installation type</b>	Surface mounting, ceiling mounting, wall mounting
<b>Type of gear</b>	LED operating device current-controlled, No dim function, 230 V - 240 V AC/DC	<b>Replaceability of control gear</b>	control gear replaceable by professional
<b>EL (Emergency Lighting)</b>	optional	<b>Replaceability of light unit</b>	LED tray replaceable by professional
<b>Max. number of luminaires Circuit breaker B16</b>	27		
<b>Max. Number of luminaires Circuit breaker C16</b>	43		
<b>Through-wiring</b>	without		

\* The above mentioned UGR is based on example calculations. The effective value can only be determined with a light calculation.

### DIAGRAMS



LOR: 82,0%