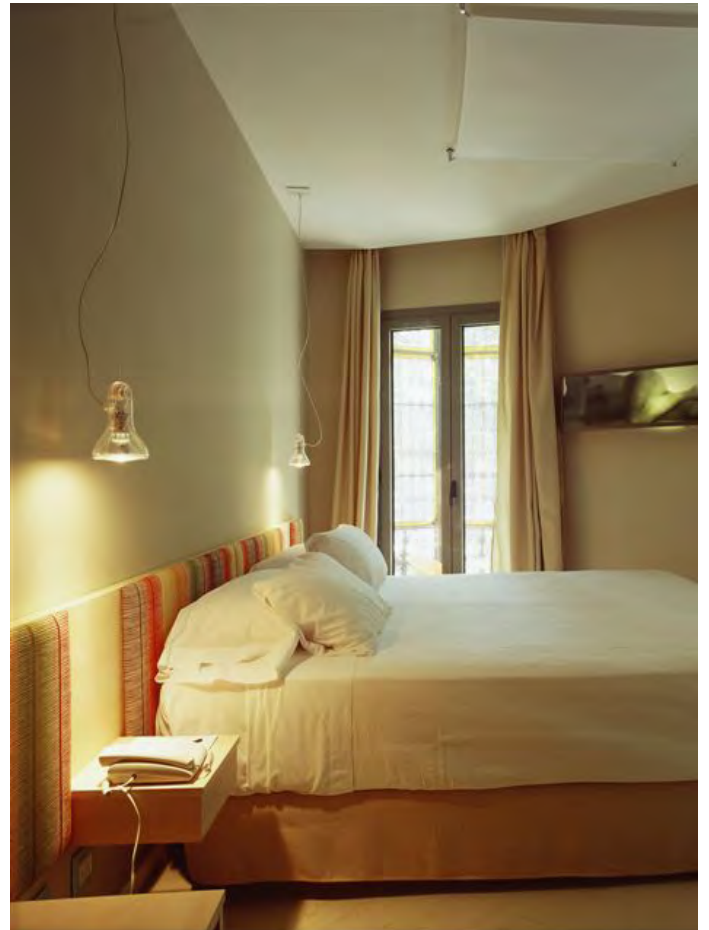
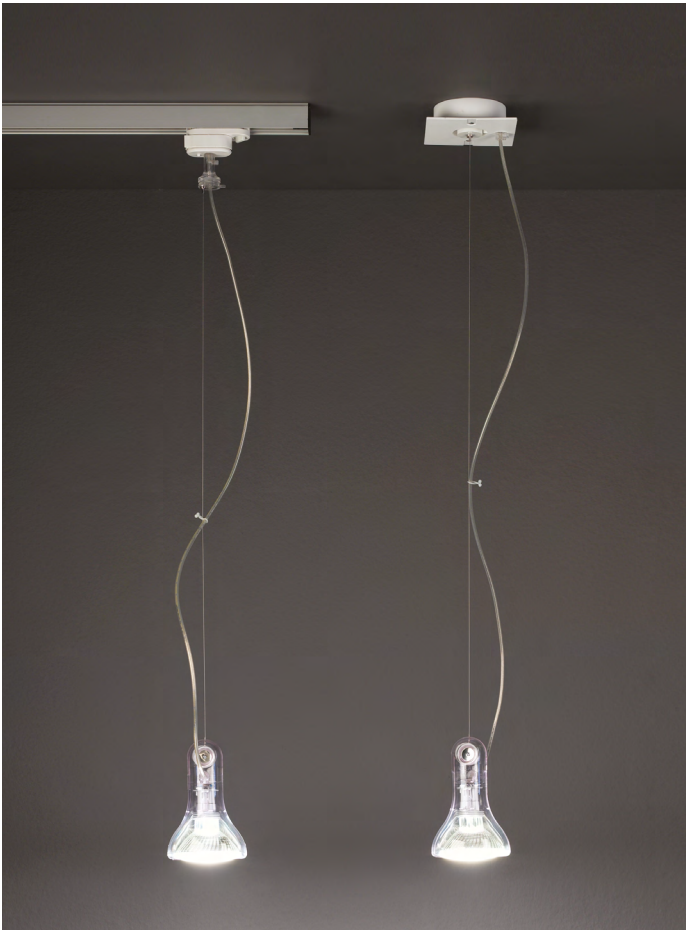




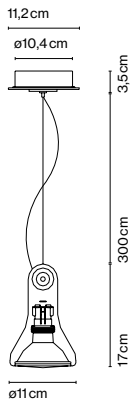
Atlas

Joan Gaspar

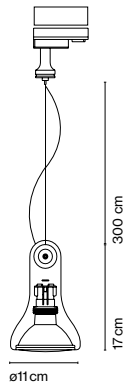
marset



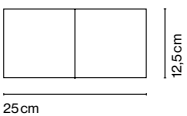
Atlas Susp.



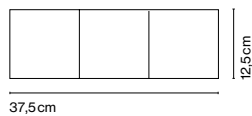
Atlas Susp. Ad.



Base Atlas 2



Base Atlas 3



Atlas Susp. / Susp. Ad.

- E27 PAR30 75W
- E27 LED PAR30 12W 30°
- 2800K 2300cd

Transparent polycarbonate shade that envelops the light source. Canopy made of white polyamide.

○ Transparent

Translucent electrical cord
Atlas with track adaptor



- [Download](#) Assembly Instructions
- [Download](#) 2D
- [Download](#) 3D
- [Download](#) Energy label

Range



info@marset.com
www.marset.com

Atlas transforms a common bulb into a spotlight, enveloping it along its outline. Taking its nudity as the starting point, it dresses the bulb up with a transparent suit that also gives the lamp the added benefit of lightness.