

Ultra Bollard

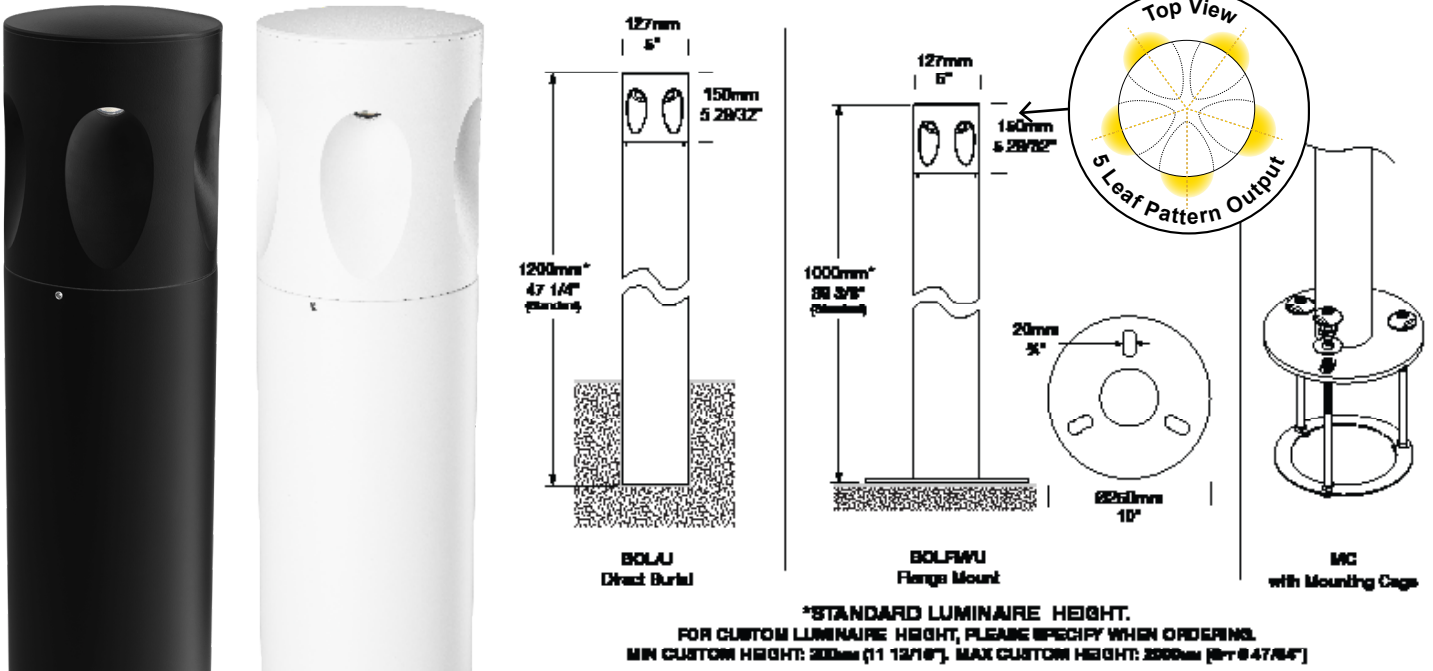
with PURE LED

PROJECT:

TYPE:

SOURCE:

NOTES:



SPECIFICATIONS

IK10 IP66 CE cUL US LISTED

LED Chip	Cree XPG-3 field replaceable LED board	CRI (3000K)	90+ Standard	Impact Resistance	IK10
Luminaire Output*	1200 Lumens @ 1050mA (15 watts)	LED Life Expectancy	50,000 hours L70	Warranty	Electronics = 5 years Aluminium Body = 5 years
Lumens Per Watt*	80 Lumens @ 15 watts minimum	Colour Temperatures	2700K, 3000K, 4000K	Standards	cUL 1598 BS/EN 60598.2.2
		Beam Angles	15°, 25°, 53°		
		Ingress Protection	IP66		

*Delivered from the Luminaire with unobstructed beam

PRODUCT CONFIGURATION

Please fill in appropriate codes into boxes provided

Cat. No. BOL/U

Luminaire	Power	Material/Finish	Beam	Colour	Accessories
BOL/U					
BOLFM/U					
SR	1050mA Input, Series Wired 15W				
R	RETRO™, 120-277VAC Input, Parallel Wired				
SR - Series Remote Driver Power Supply: Constant current driver INCLUDED - NOT INSTALLED Wiring Method: Wired in series Fixture Input: Individual fixtures require 15Vf @ 1050mA maximum 15 Watts					
RETRO 110-277VAC Driver: Power Supply: Constant current driver (included) Wiring Method: Parallel Wired Input: 120, 240, 277 VAC Output: 15 Watts total 15Vf @ 1050mA. 0-10 volt dimming.					
		ALUMINIUM EBK BLACK EBZ BRONZE EOGR OLIVE GREEN EWH WHITE EWB WHITE BIRCH EDG DARK GREY ESTAR SILVER STAR ECT CORTEN	15 15° 25 25° 53 53°	2 2700K 3 3000K 4 4000K	CJK Cable Joint Kit MOUNTCAGE Mounting Cage* * Only available for Flange Mount Version
Additional Comments:					

*Due to continued product enhancements, specifications may change without notification.

LUMINAIRE CONSTRUCTION

CNC machined from one of the following metals:

Aluminium:

End cap: 130mm (5 1/8") solid aluminium rod.

Head: 130mm (5 1/8") solid aluminium rod.

Pole: 127mm (5") high corrosion resistant aluminium tube with chromate substrate and high UV resistant polyester powder coat.

Colours: Black, Bronze, Silver Star, White, White Birch, Olive Green, Dark Grey, Corten.

Cable:

Water resistant rubber SWOOJ cable with HUNZA™ Anti-Syphon™ barrier system

Gaskets:

Silicone, iron impregnated 220°C (428°F).

Lens:

TIR lens with lifetime warranty.

Mounting:

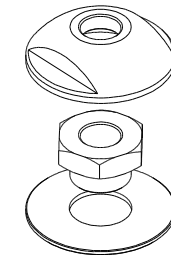
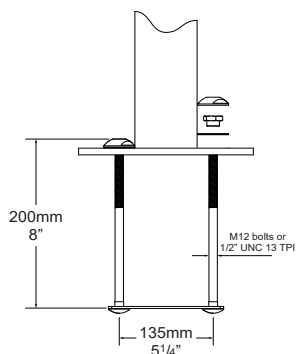
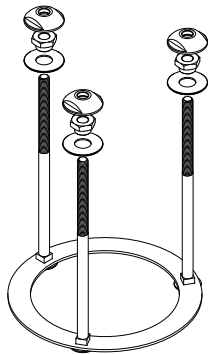
The pole is cast into concrete or mounted via flange mount - please refer to the Hunza website for mounting instructions.

Luminaire Weight:

4kg (8lb 13oz) - head only



ACCESSORIES



(for use with M12 J-bolts or 1/2" UNC 13 TPI J-bolts)

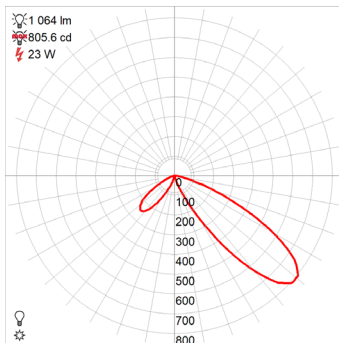
MOUNTCAGE - Mounting Cage with Anti Slip Dome Nut

*Only available for Flange Mount Version

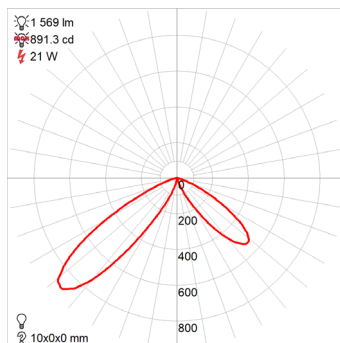
BEAM ANGLES

High efficiency Reflectors. Field replaceable

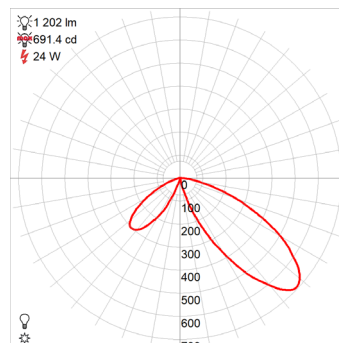
IES files available for download: hunzalighting.com/downloads



**15° FWHM*
TIR**



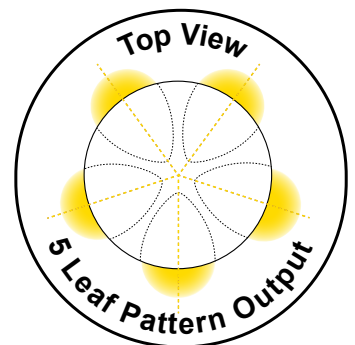
**25° FWHM*
TIR**



**45° FWHM*
TIR**

*Per "Leaf" (5 leaves per fixture).

Note: All leaves will have the same beam angle.

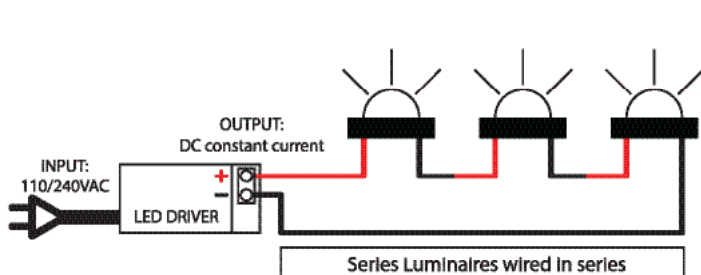


WIRING GUIDE

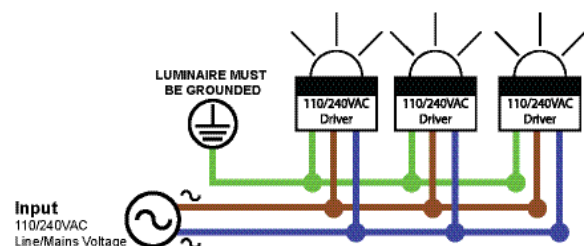
Available for download: hunzalighting.com/downloads

NOTE: Diagrams are a guide only, wire colours and polarity may change depending on fixture and country.

Series/Remote Driver



RETRO™ 110-277VAC Driver



*Due to continued product enhancements, specifications may change without notification.

HUNZA™

HUNZA LIGHTING
130 Felton Mathew Ave
Saint Johns
Auckland 1072
New Zealand

Ph: +64-9-528 9471
hunza@hunza.co.nz
www.hunzalighting.com

INTERNATIONAL CONTACTS:
www.hunzalighting.com/contact

This document contains proprietary information of Hunza™. Its receipt or possession does not convey any rights to reproduce or disclose its content.