



SPSK1002
Design by Manuel Vivian

Collection of suspended lamps in flame-retardant TREVIRA@CS fabric (100% polyester Glow wire 960 °C), available in several sizes and colours. The fabric can also come in a double-layer version with an exterior black net fabric. A decorative inner lampshade (also printable with customized graphic) is available.

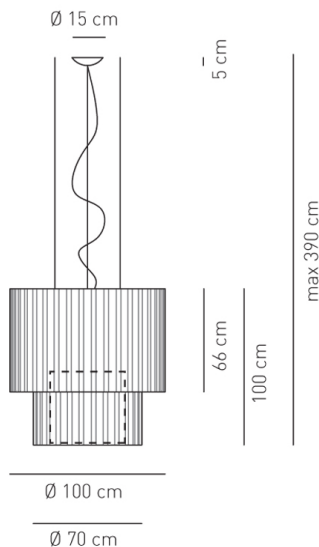
Typology: SUSPENDED

Ratings

- Built in **LED** module
- CCT 3000 K
- Downlight and uplight
- Surface installation over holes
- Supply voltage ~220-240V
- Switch mode: on-off
- Dimmable DALI LED driver
- Steel frame, painted
- Cone in pongé fabric and light covering in jersey

kg 18 m³ 1.06

Product code composition



SKIRT / diffuser *INCLUDED*, with upward and downward lighting

Type	Article	Exterior Net	Fabric Colours	Source
SP	SK 100 2 LED	NE black net	BC white	LED 95W - diffused beam 3000K
		XX no black net	AR orange	
			AZ light blue	
			BL blue	
			FU fuchsia	
			GR light grey	
			MA brown	
			RS red	
			VE light green	

SINGLE FABRIC

Fireproof class I= C1, GB= CRIB 5, D=B1, F= M1, EN= 102/1-2, A 652 / Weight 340 ± 5% gr/m² / Abrasion resistance (Martindale): 40.000 ± 10% rubs / Pilling Grade 5 / Light fastness grade 6

BLACK NET FINISH FABRIC

Fireproof class I= C1, F= M1, D= B1 DIN 4102 / Weight 214 ± 5% gr/m² / Abrasion resistance (Martindale): 30.000 ± 10% rubs / Pilling Grade 5 / Light fastness grade 5

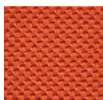
CE IP20 CR190 **LED** ~6209 lm 65 lm/W

example composition code | SP | SK1002LED | NE | MA |

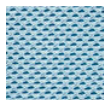
Available colors



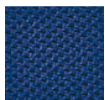
BC White



AR Orange



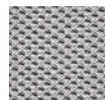
AZ Light blue



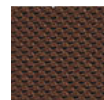
BL Blue



FU Fuchsia



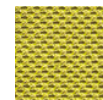
GR Light grey



MA Brown



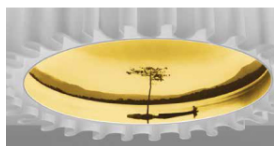
RS Red



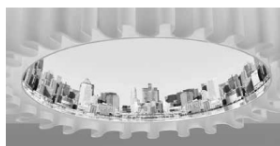
VE Light green



Black net over a white fabric NEBC



Optional inner decorative Lampshade "Nature graphic"



Optional inner decorative Lampshade "Urban graphic"



Optional inner decorative Lampshade "Flowers graphic"

EELc (Energy Efficiency Label compatibility) contain built in LED lamps that cannot be changed: A, A+, A++

SPSK1002LED_ _ _ _

CUSTOMER _____

NOTES _____

NOTICE:

Luminous flux (lm) and efficacy (lm/W) for all LED luminaires is estimated based on nominal ratings of the LED sources. Technical data could be subject to alteration without notice. Axo Light does not provide legal guarantee for the accuracy of this data sheet.