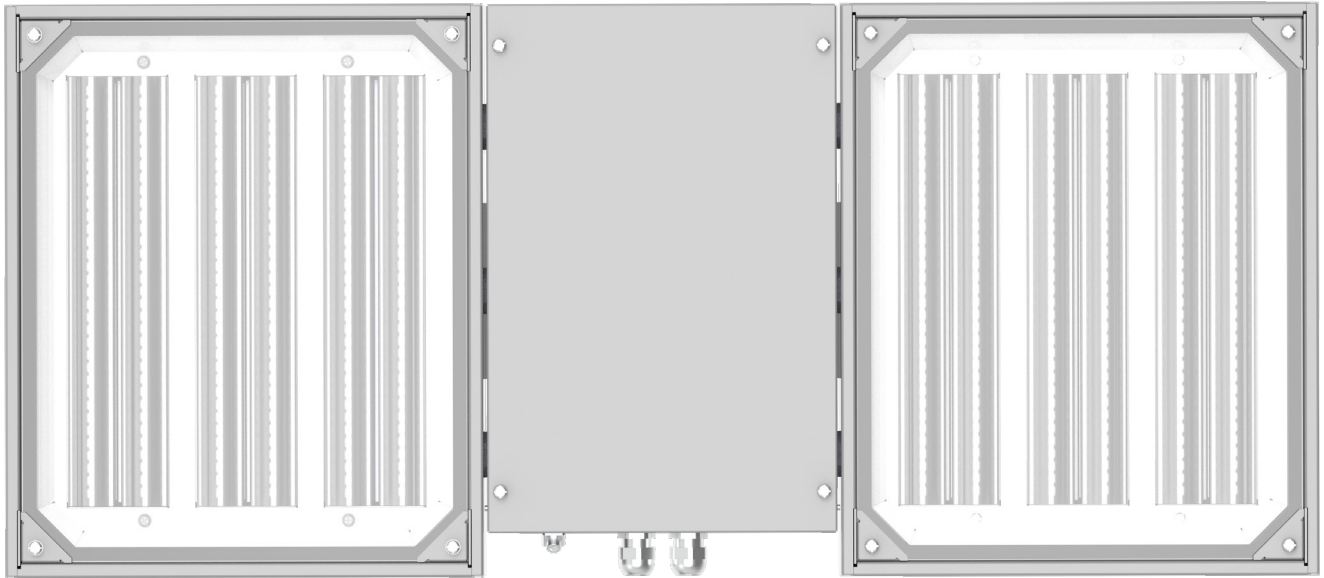
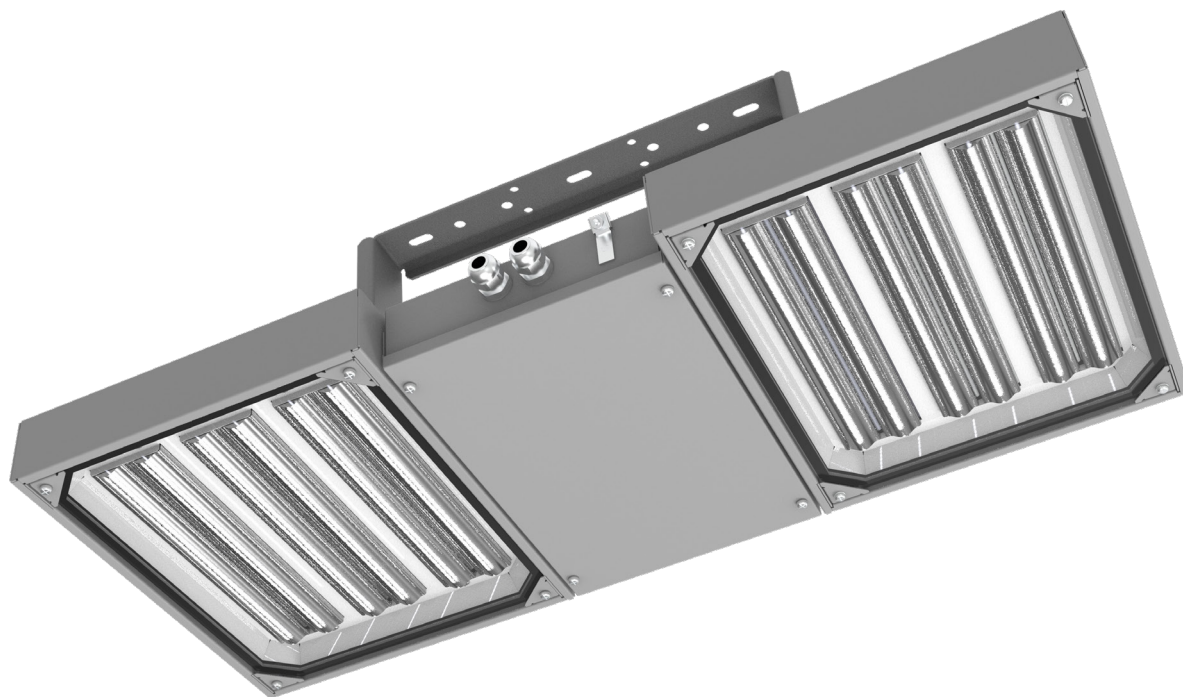


ZONE 21&amp;2,22



EXL380LED





EX MARKING:



II 3G Ex ec op is IIC T4 Gc  
II 2D Ex tb op is IIC T80°C Db

CERTIFICATES:

KDB 15ATEX0049X  
IECEX KDB 20.0003X

## EXEMPLARY APPLICATIONS



REFINERIES



OFFSHORE

CHEMICAL  
PLANTSCHEMICAL  
WAREHOUSES







DESTILERIES

Explosionproof floodlight with **LED modules**. Designed to work in the zone **21 & 2.22** of the explosion hazard of gases, vapors and mists of flammable liquids with air, as well as of flammable dusts and fibers. The housing is made of powder coated or brushed stainless steel.

Optional version **DA** with an integrated power supply with DALI interface.

## FEATURES

## MECHANICAL PARAMETERS

	housing	powder coated or brushed stainless steel
	diffuser	tempered glass
	ingress protection	IP65
	protection class	I
	impact resistance	IK08
	mounting	on bracket

## ELECTRICAL PARAMETERS

2,5 mm<sup>2</sup>connection  
terminals

230V, 0/50-60 Hz

input  
voltageintrinsically safe  
LED moduleslight  
source

&gt;0,97

power  
factor

Ø20

cable  
inlets

2 kV

overvoltage  
protection

## WORK PARAMETERS

	ambient temperature	-40°C to +40°C <i>check: types comparison</i>
	lifetime	>70.000h L <sub>80</sub> B <sub>10</sub>

## PHOTOMETRICAL PARAMETERS

CRI

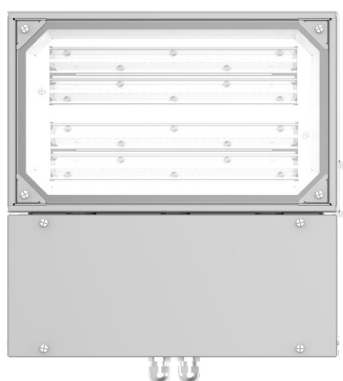


&gt;80

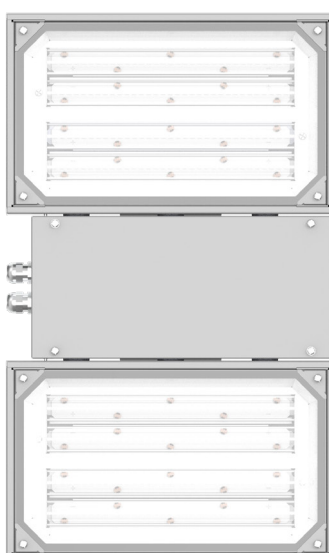
colour  
temperature

4000K

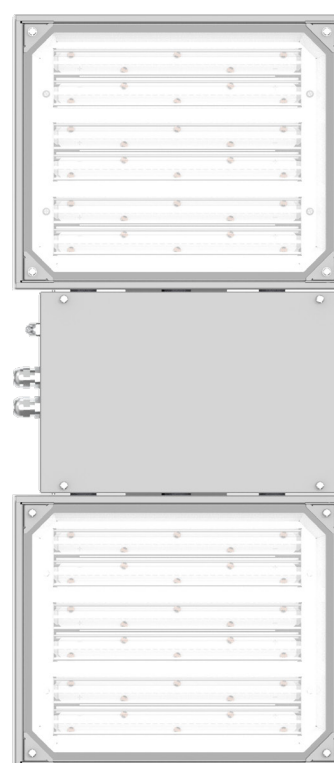
EXL380LED-045



EXL380LED-090

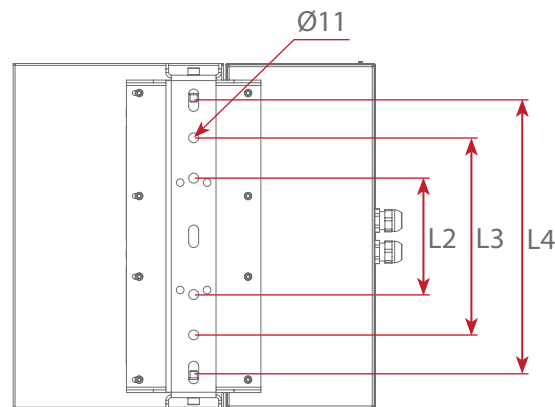
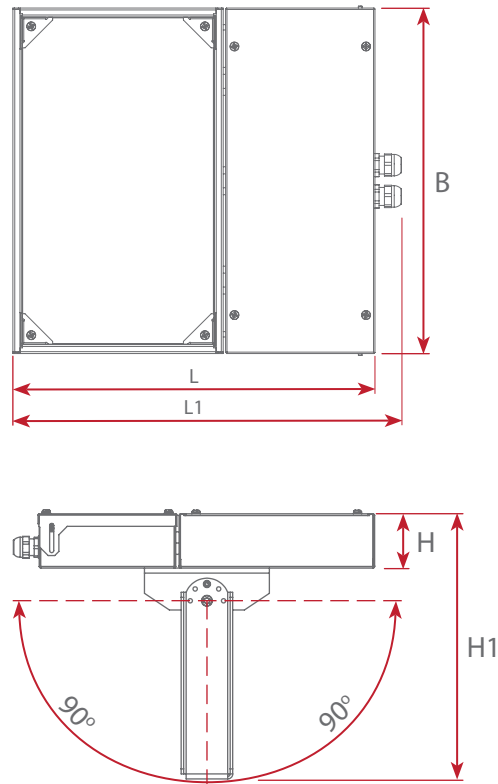


EXL380LED-130

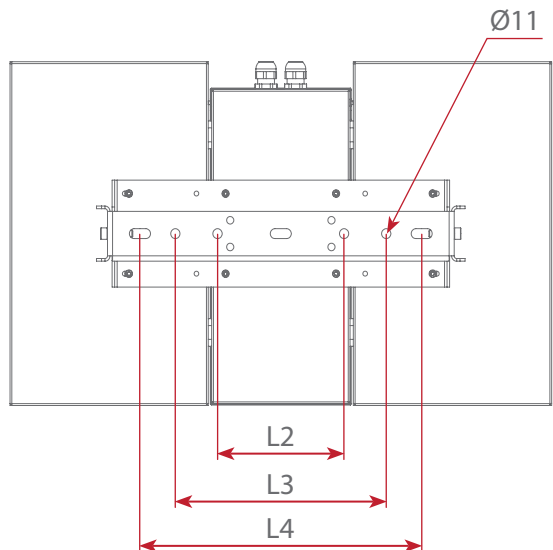
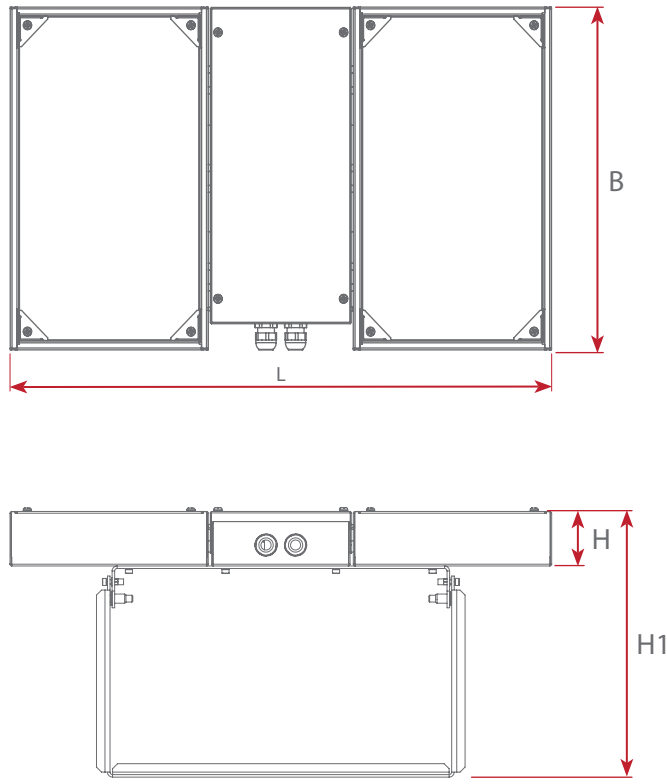


DIMENSIONS

EXL380LED-045-E4  
single version



EXL380LED-090-E8, EXL380LED-130-E12  
double version



TYPE	L	L1	L2	L3	L4	B	H	H1
EXL380LED-045-E4	405	434	130	220	290	386	69	321
EXL380LED-090-E8	642	-	150	250	335	386	69	321
EXL380LED-130-E12	885	-	150	250	335	386	69	321

## TYPES COMPARISON

## REGULAR VERSIONS

TYPE OF THE FITTING	LUMINOUS FLUX [lm]	POWER CONSUMPTION [W]	EFFICIENCY [lm/W]	AMBIENT TEMPERATURE [°C]
EXL380LED-045-E4	6 570	53	124	-40 ÷ 40
EXL380LED-090-E8	13 244	98	135	-40 ÷ 40
EXL380LED-130-E12	19 215	146	132	-40 ÷ 40

## NARROW-STREAM VERSIONS (NB)

TYPE OF THE FITTING	LUMINOUS FLUX [lm]	POWER CONSUMPTION [W]	EFFICIENCY [lm/W]	AMBIENT TEMPERATURE [°C]
EXL380LED-045-E4	7 423	53	140	-40 ÷ 40
EXL380LED-090-E8	13 299	98	136	-40 ÷ 40
EXL380LED-130-E12	20 748	146	142	-40 ÷ 40



Luminous flux tolerance +/- 10%

Power tolerance +/- 10%

The parameters given in the following data sheet has been determined for the temperature  $T_a=25^{\circ}\text{C}$ .

Luminous flux, light intensity distribution and efficiency has been tested on the basis of the standards EN ISO 17025:2018-02, norm series EN13032 and LM-79.

The actual data and General Warranty Conditions are available on our website [www.atmlighting.pl](http://www.atmlighting.pl)

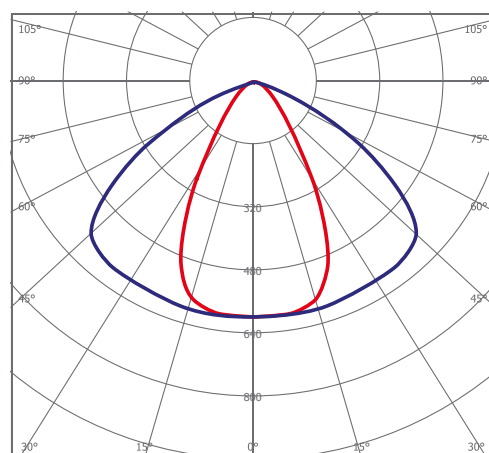
## OPTIONAL VERSIONS



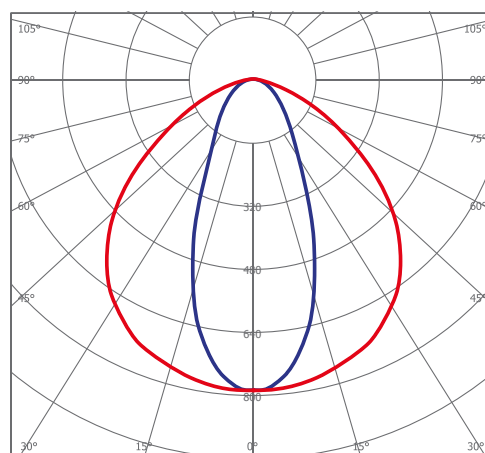
The optional DA version is equipped with an integrated power supply with a DALI interface, which allows to monitor the operation of light fixtures and control lighting using data directly from motion sensors or from the Building Management System (BMS). A properly configured lighting control system can significantly reduce electricity costs and improve the ergonomics of users' work.

## PHOTOMETRY

REGULAR VERSIONS



NARROW-BEAM VERSIONS (NB)





## CONFIGURATIONS

E X L 3 8 0 L E D -										- E		- 3 5 E -		30 -		M	20 -		NIRO -					
<b>group</b> explosionproof light fittings										0 4 5		4		50		10	25		BRS	GL	NB	DA		
<b>type</b> type 380										0 9 0		8		70		11								
<b>source of light</b> LED modules										1 3 0		12												
<b>approximate power consumption</b> check the types comparison																								
<b>LED module type</b>																								
<b>LED modules quantity</b>																								
<b>power supply</b> 35E - 230V, 0/50÷60Hz																								
<b>wiring</b> 30 - single 3-pole terminal → <input type="text" value="3"/> 50 - single 5-pole terminal → <input type="text" value="5"/> 70 - single 7-pole terminal → <input type="text" value="7"/>																								
<b>cable inlets - quantity</b> 10 - one cable inlet on the side of the housing → <input type="text" value="1"/> 11 - two cable inlets on the side of the housing → <input type="text" value="1"/>																								
<b>cable inlets - material</b> M - metal																								
<b>cable inlets - size</b> 20 - Ø20 25 - Ø25																								
<b>housing material</b> NIRO - stainless steel BRS - brushed stainless steel																								
<b>diffuser material</b> GL - tempered glass																								
<b>optics</b> none - regular version NB - narrow-beam version																								
<b>emergency versions</b> DA - version with integrated power supply with DALI interface																								

## DOWNLOADS

