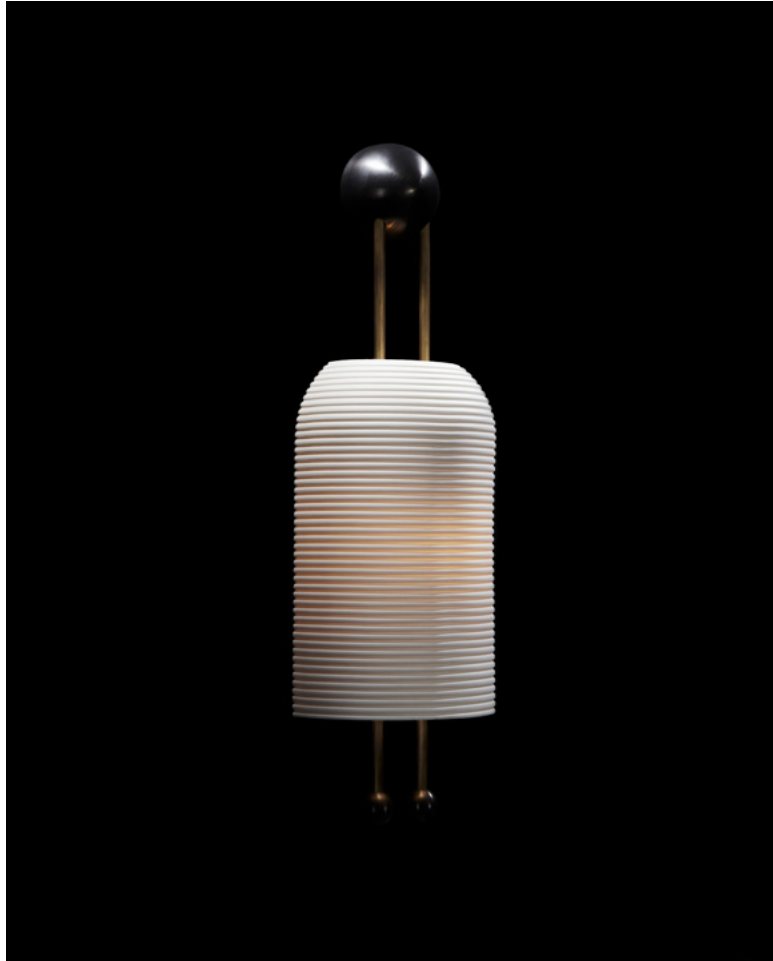


# A P P A R A T U S



TWO TONE | AGED BRASS / BLACKENED BRASS

## LANTERN : SCONCE

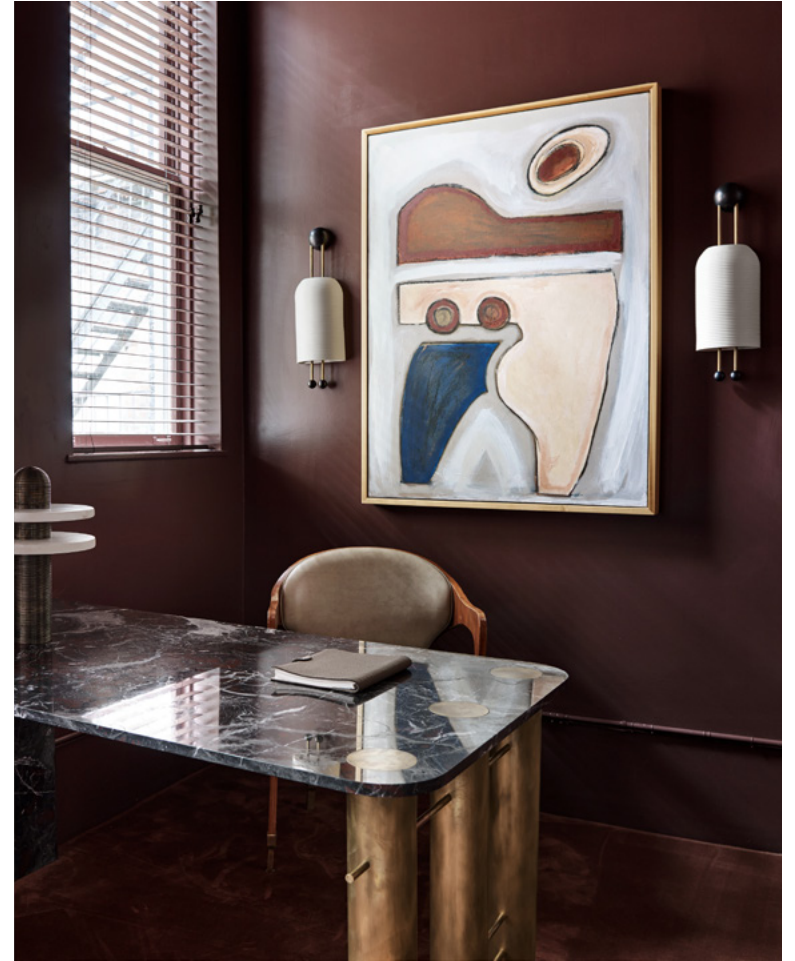
REFERENCE      FRITZ LANG'S METROPOLIS  
                         CHŌCHIN  
                         WIENER WERKSTATTE

COMPOSITION    SLIP-CAST, FLUTED PORCELAIN SHADE  
                         BRASS ARMATURE

A P P A R A T U S

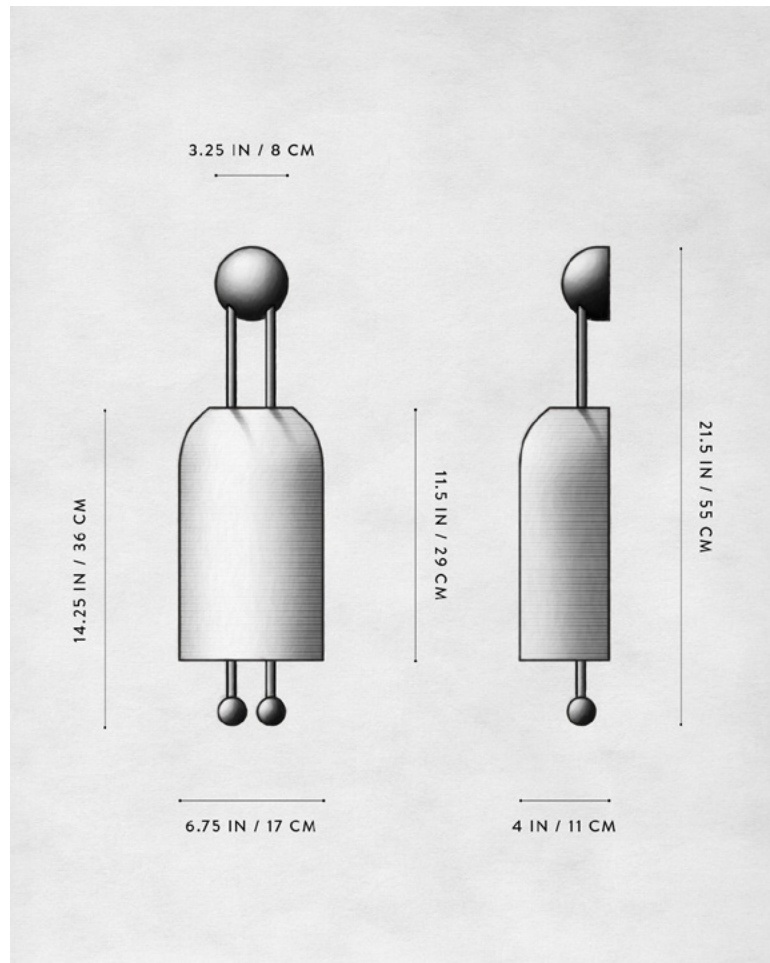


AGED BRASS / BLACKENED BRASS



AGED BRASS / BLACKENED BRASS

# A P P A R A T U S



## LANTERN : SCONCE

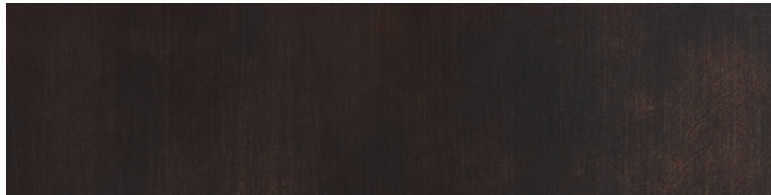
DIMENSIONS	21.5 H, 6.75 W, 4 D IN 55 H, 17 W, 11 D CM
WEIGHT	APPROX. 5 LBS / 2 KG
PRICE	FROM £4700
VOLTAGE	120-240 UL / CE
LAMPING	MAX 40W
BULB INCLUDED	5W 3.8W DIMMABLE LED BULB 220 LUMENS 2000 - 2800K 120V : E12 SPHERE I : MATTE WHITE 240V : E14 SPHERE I : MATTE WHITE
BULB LIFE	15,000 HOURS
DEPOSIT	50% UPON ORDER
BALANCE	DUE PRIOR TO SHIPPING
LEAD TIME	PLEASE REFER TO WEBSITE

FINISHED AND ASSEMBLED BY HAND IN NY  
DOMESTIC AND IMPORTED COMPONENTS

# A P P A R A T U S



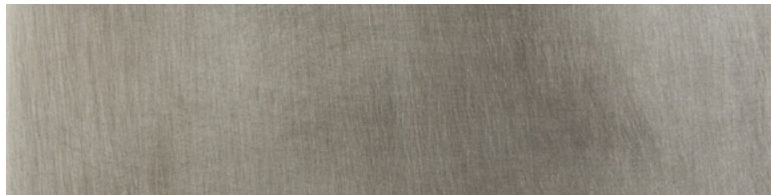
AGED BRASS



OIL-RUBBED BRONZE



BLACKENED BRASS



TARNISHED SILVER

METAL

LANTERN

AGED BRASS [WAXED]

OIL-RUBBED BRONZE [WAXED]

BLACKENED BRASS [WAXED]

TARNISHED SILVER [LACQUERED] ADD 35%