



Arpool XM

Specification Sheet



UL STD 676 swimming pool rated
CSA C22.2#89 swimming pool rated
IP68

LUMINAIRE FEATURES

Design and Application

- Installation depth max. up to 5m (16')
- Max tile thickness 25mm (1")
- Trim flange overlap 10mm (0,4")
- Low glare louvre
- DMX, DALI, 0-10V compatible (remote)
- Wall installation
- Medium and large pools
- Fountains and water features

Performance

- IK10, Tempered glass, crystal clear
- Chlorine and saline environment
- Stainless Steel type 316L, marine grade
- Galvanic current protection
(installation housing)
- Thermal fold back technology
- LED Lifetime TM-21 @ 105°C
L80(24K) = 145,000 hours
- Supplied with oil and water resistant
3m (10') feed cable as standard
- CRI: > 85
- 3 Step MacAdam

Safety

- Remote power supply
- Low voltage operation
- Recessed installation

Sustainability

- Recyclable material

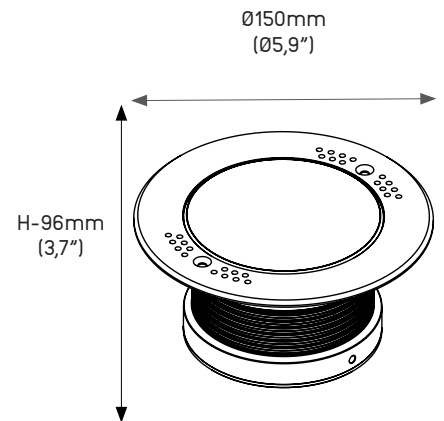
Installation housing

- AXM390 - Concrete Pool Installation
- AXMSP - Stainless Steel Pool Installation
- AXMLN - Liner Pool Installation

Power supplies

- List of proposed power supplies that are to be ordered separately.
- Click [here](#) for list of available drivers.
- Click [here](#) for voltage drop and distances

TRIM (TM)



Click [here](#) to download fixture installation manual.
Click [here](#) to download housing installation manual.
Click [here](#) to download CAD file.
Click [here](#) to download IES-LTD data.

Note

Underwater luminaire – must be constantly submersed.



Arpool XM

ORDERING INFORMATION

MODEL

AXM

APPLICATION

TM

- TM - Ø150mm x 96mm (Ø5,9" x 3,7")

POWER

L

- L - 21W 3000/4000K, 2079 lm
- L - 21W RGBW (W 4000K)

COLOR TEMP.

27

- 27 - 2700K

30

- 30 - 3000K

40

- 40 - 4000K

RGBW

- RGBW (W 4000K)

TW

- TW - Tunable white 2200K-4000K

OPTICS

SP

- SP - Spot - 15°

FL

- FL - Flood - 40°

W

- W - Wide - 70°

SE

- SE - Elliptical - 20°x 120°

SPX

- SPX - Spot - 15° + Hex

FLX

- FLX - Flood - 40° + Hex

WX

- WX - Wide - 70° + Hex

SEX

- SEX - Elliptical - 20°x 120° + hex

VOLTAGE

12

- 12 - 12VDC fixture voltage

24

- 24 - 24VDC fixture voltage

OPTIONS

3

- 3* - standard feed cable 3m (10')

6

- 6 - luminaire supplied with 6m (20') feed cable

9

- 9 - luminaire supplied with 9m (30') feed cable

20

- 20 - luminaire supplied with 20m (65') feed cable

GLARE CONTROL

1

- 1 - Half Moon

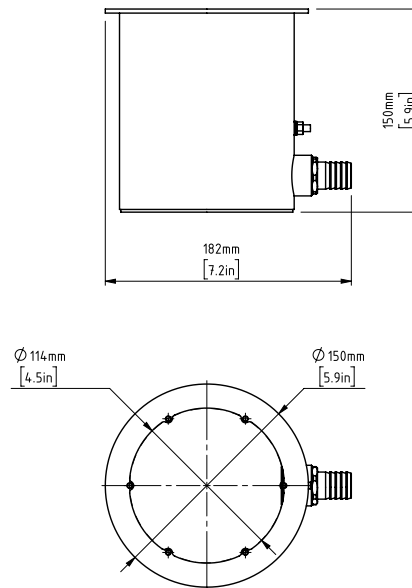
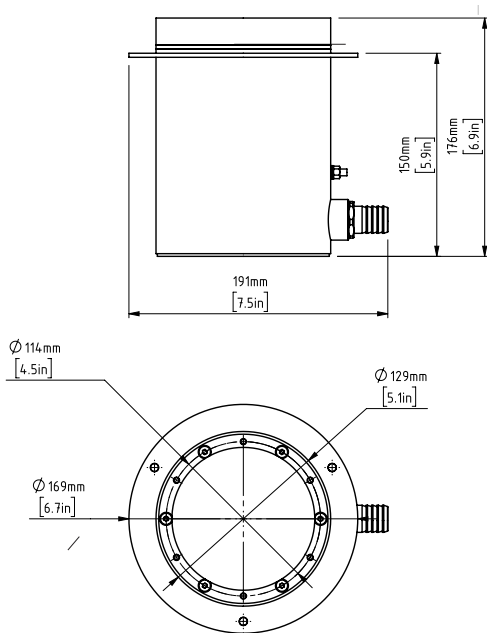


Arpool XM

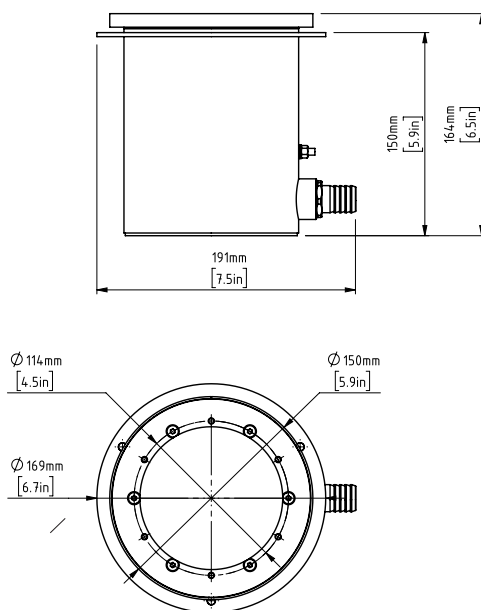
HOUSING

Installation housing AXM390 *fits 1m (3,3') cable
Concrete pool installation

Installation housing AXMSP *fits 1m (3,3') cable
Stainless steel pool installation trim



Installation housing AXMLN*fits 1m (3,3') cable
Liner pool installation



Note:
For details on specific depths, tiling thickness and other please refer to both Installation instructions for fixture and housing.