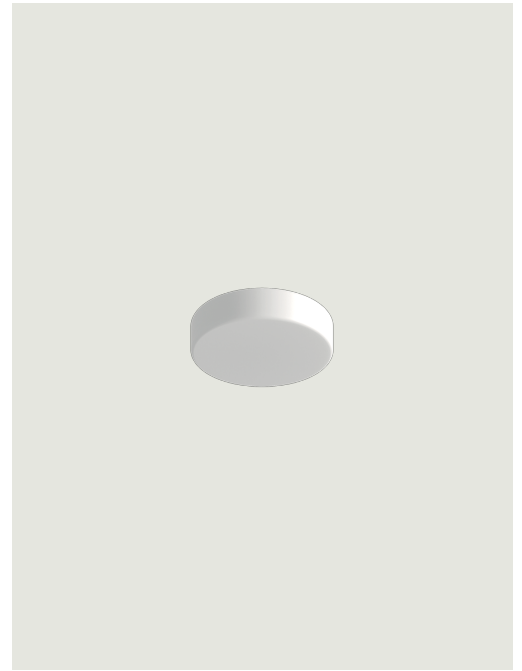


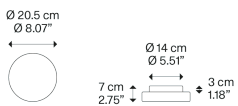
Make-Up,
Design by Studio Italia Design

Model Make-Up small

Make-Up's design is inspired by fashion and beauty. A versatile blown glass lamp with a gentle shape, Make-Up dresses the wall or ceiling with light. Elegantly functional when used individually, it acquires a highly decorative appeal in lively compositions of different sizes and volumes.



Make-Up small



Light source

Led
3000 K
8 W / 980 lm
220–240 V
CRI 92
MacAdam 3–Step

LED included

Structure: Metal

 Matte White – 9016

Diffuser: Blown glass

 Frosted White

Code


15041 30


Net weight: 1.30 kg

Parcels: 1



IP20

Energy Saving 

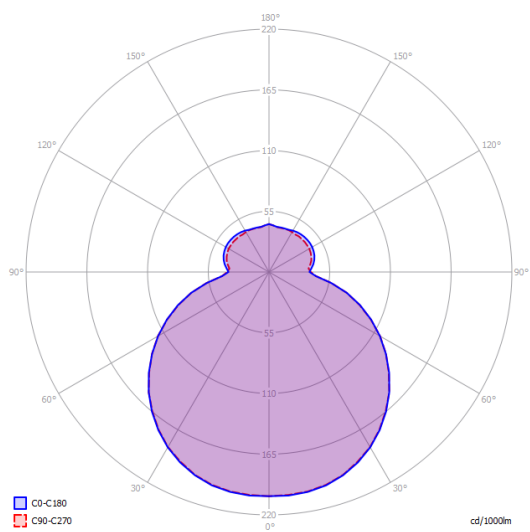
Dim Triac 



Make-Up small

Led
3000 K
8 W / 980 lm
220-240 V
CRI 92
MacAdam 3-Step

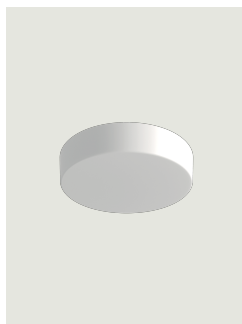
Polar diagram



Options of Make-Up



Make-Up medium



Make-Up large