

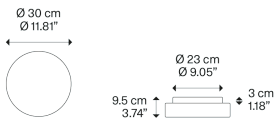
Make-Up,  
Design by Studio Italia Design

Model Make-Up medium

Make-Up's design is inspired by fashion and beauty. A versatile blown glass lamp with a gentle shape, Make-Up dresses the wall or ceiling with light. Elegantly functional when used individually, it acquires a highly decorative appeal in lively compositions of different sizes and volumes.



Make-Up medium



Light source

LED  
3000 K  
15 W / 1850 lm  
220–240 V  
CRI 92  
MacAdam 3–Step

LED included

Structure: Metal

● Matte White – 9016

Diffuser: Blown glass

● Frosted White

Code

15042 30

Net weight: 2.32 kg



IP20

Energy Saving

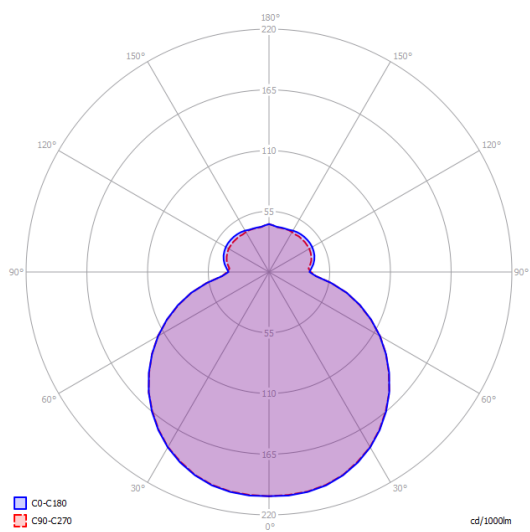
Dim Triac



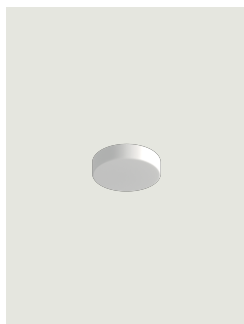
## Make-Up medium

LED  
3000 K  
15 W / 1850 lm  
220-240 V  
CRI 92  
MacAdam 3-Step

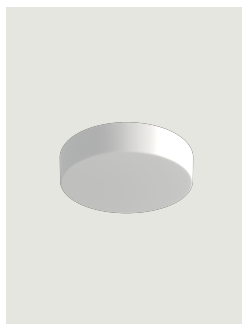
## Polar diagram



## Options of Make-Up



Make-Up small



Make-Up large