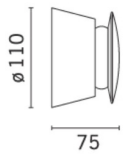
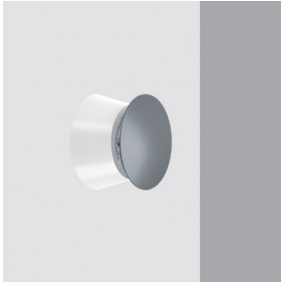


Last information update: May 2018



Wall/ceiling mounted, ø110mm luminaire with an electronic transformer - Warm White - 360° radial effect

Product code

BU17

Technical description

Wall and ceiling-mounted luminaire, complete with driver and designed for use with LED lamps and a patented 360° radial effect optic. The product consists of a support base and screen. The base is made of phosphocromatization treated, die-cast aluminium, with a double base coat and passivation at 120°C. It is coated with liquid acrylic paint, cured at 150 °C to guarantee a high level of weather and UV ray resistance. The screen is made of PMMA. All the screws used are made of A2 stainless steel.

Installation

Wall and ceiling mounted by means of a stainless steel wall fixture plate.

Dimension (mm)

Ø110x75

Colour

White (01) | White/Chrome (E4) | White/Grey (E5)

Weight (Kg)

0.59

Mounting

wall surface|ceiling surface

Wiring

Product supplied with an outlet cable L=200mm. Equipped with electronic ballast.

Notes

The chrome-coloured version of Trick (10) can only be used internally.

Complies with EN60598-1 and pertinent regulations

**Product configuration: BU17****Product characteristics**

Total lighting output [Lm]: 252
Total power [W]: 7.2
Luminous efficacy [Lm/W]: 35
Life Time: 50,000h - L80 - B10 (Ta 25°C)
Number of optical assemblies: 1

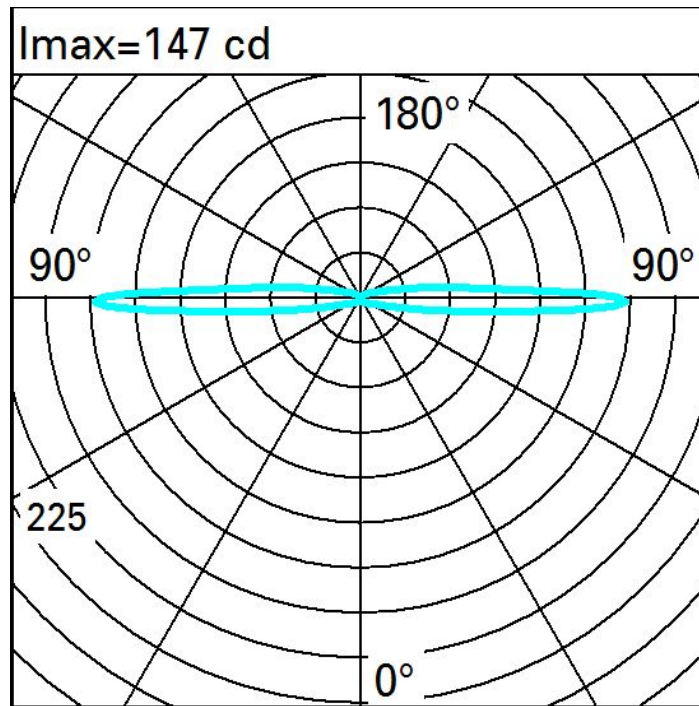
Total luminous flux at or above an angle of 90° [Lm]: 104
Emergency luminous flux [Lm]: /
Voltage [V]: -
Ambient temperature range: from -20°C to +35°C.

Optical assembly Characteristics Type 1

Light Output Ratio (L.O.R.) [%]: 36
Lamp code: LED
ZVEI Code: LED
Nominal power [W]: 5.7
Nominal luminous [Lm]: 700
Lamp maximum intensity [cd]: /
Beam angle [°]: /

Number of lamps for optical assembly: 1
Socket: /
Ballast losses [W]: 1.5
Colour temperature [K]: 3000
CRI: 80
Wavelength [Nm]: /
MacAdam Step: 3

Polar



Isolux

