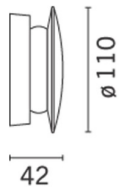
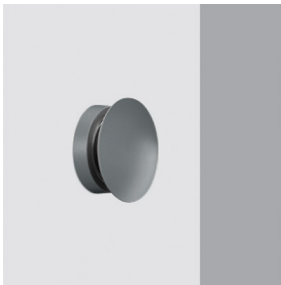


## Trick

Design Dean Skira

iGuzzini

Last information update: May 2018



Wall/ceiling mounted,  $\varnothing 110$ mm luminaire without an electronic transformer - Warm White - 360° radial effect

### Product code

BU10

### Technical description

Wall and ceiling-mounted luminaire, designed for use with LED lamps and a patented 360° radial effect optic. The product consists of a support base and screen. The base is made of phosphocromatization treated, die-cast aluminium, with a double base coat and passivation at 120°C. It is coated with liquid acrylic paint, cured at 150 °C to guarantee a high level of weather and UV ray resistance. The screen is made of methacrylate. All the screws used are made of A2 stainless steel.

### Installation

Wall and ceiling mounted by means of a stainless steel wall fixture plate.

### Dimension (mm)

$\varnothing 110 \times 42$

### Colour

White (01) | Chrome (10) | Grey (15)

### Weight (Kg)

0.27

### Mounting

wall surface|ceiling surface

### Wiring

Product supplied with an outlet cable L=200mm. Electronic ballast to be ordered separately.

### Notes

Compatible with the Master Pro DMX control system. The chrome-coloured version of Trick (10) can only be used internally.

Complies with EN60598-1 and pertinent regulations



### Product configuration: BU10

#### Product characteristics

Total lighting output [Lm]: 252  
Total power [W]: 6  
Luminous efficacy [Lm/W]: 42  
Life Time: 50,000h - L80 - B10 (Ta 25°C)  
Number of optical assemblies: 1

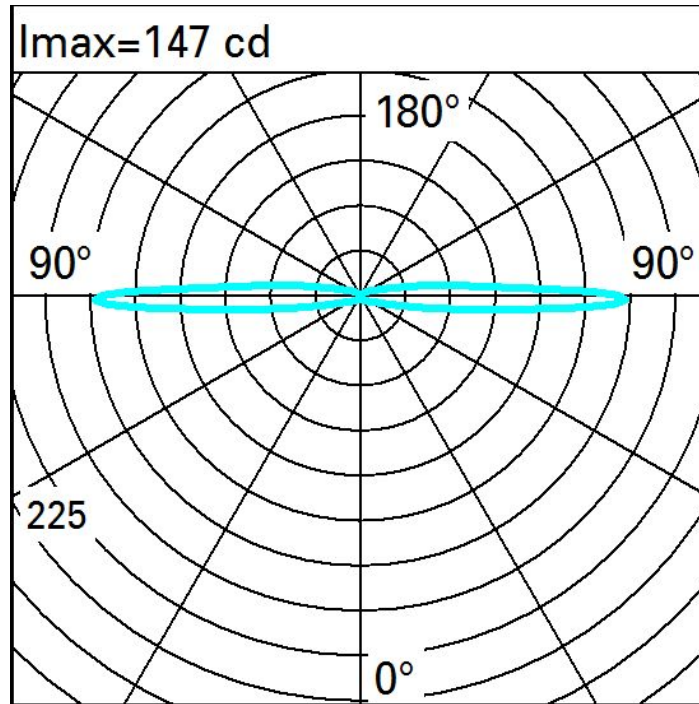
Total luminous flux at or above an angle of 90° [Lm]: 104  
Emergency luminous flux [Lm]: /  
Voltage [V]: -  
Ambient temperature range: from -20°C to +35°C.

#### Optical assembly Characteristics Type 1

Light Output Ratio (L.O.R.) [%]: 36  
Lamp code: LED  
ZVEI Code: LED  
Nominal power [W]: 5.7  
Nominal luminous [Lm]: 700  
Lamp maximum intensity [cd]: /  
Beam angle [°]: /

Number of lamps for optical assembly: 1  
Socket: /  
Ballast losses [W]: 0.3  
Colour temperature [K]: 3000  
CRI: 80  
Wavelength [Nm]: /  
MacAdam Step: 3

Polar



Isolux

