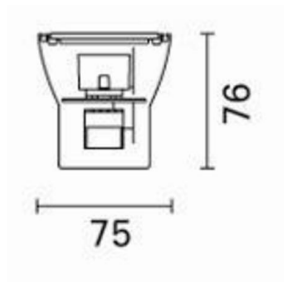
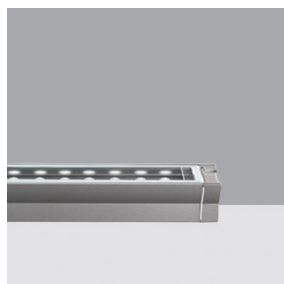


Last information update: May 2018

**Warm White -elliptic Optic****Product code**

BD66

Technical description

Direct light luminaire designed to use LED lamps. Monochrome version complete with 28x1W Warm White (3100K) multi-LED plate, optic with plastic lenses, elliptical version. Complete with plastic translucent filter, lamp and equipped with electronic power supply. Consists of a body made of extruded aluminium, with dual phosphorous – chromium plating of the base metal, passivation at 120°C and with die-cast aluminium end caps complete with 50/60 Shore A silicone seals, subjected to post-cooling treatment at 200°C. Painted with liquid acrylic paint highly resistant to atmospheric agents and UV rays, curing at 150°C. The top of the optical assembly is closed by a 4 mm thick, semi-acid finished, tempered sodium – calcium glass screen, fixed with silicone. PG11 nickel - plated brass cable clamp, suitable for cables with \varnothing 6.5 – 11 mm, for single power cable entrance. Anti-glare screens and coloured filters are available as accessories upon request. All external screws are made of A2 stainless steel.

Installation

Wall-mounted using brackets, extendable arms adjustable through $\pm 90^\circ$; ceiling-mounted using a plate for surface-mounting or ceiling-mounting, with suspension cables and rigid rods

Dimension (mm)

1238x75x76

Colour

Grey (15)

Weight (Kg)

4

Mounting

wall surface|ceiling surface|ceiling pendant

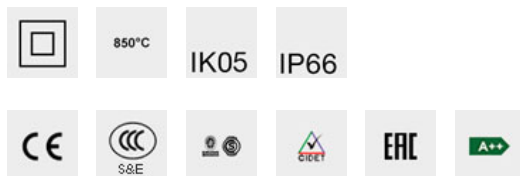
Wiring

Wall-mounted using brackets, extendable arms adjustable through $\pm 90^\circ$; ceiling-mounted using a plate for surface-mounting or ceiling-mounting, with suspension cables and rigid rods

Notes

21x1W (L=942mm) version available upon request.

Complies with EN60598-1 and pertinent regulations

**Product configuration: BD66****Product characteristics**

Total lighting output [Lm]: 1150.2
 Total power [W]: 37.2
 Luminous efficacy [Lm/W]: 30.9
 Life Time: 50,000h - L70 - B20 (Ta 25°C)
 Number of optical assemblies: 1

Total luminous flux at or above an angle of 90° [Lm]: 0
 Emergency luminous flux [Lm]: /
 Voltage [V]: -
 Ambient temperature range: from -20°C to +35°C.

Optical assembly Characteristics Type 1

Light Output Ratio (L.O.R.) [%]: 52
 Lamp code: LED
 ZVEI Code: LED
 Nominal power [W]: 32
 Nominal luminous [Lm]: 2193
 Lamp maximum intensity [cd]: /
 Beam angle [°]: $10^\circ / 48^\circ$

Number of lamps for optical assembly: 1
 Socket: /
 Ballast losses [W]: 5.2
 Colour temperature [K]: 3200
 CRI: 80
 Wavelength [Nm]: /
 MacAdam Step: 3

Polar

