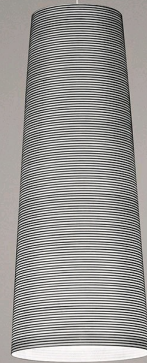


# Tite 2, sospensione

by Marc Sadler

FOSCARINI



## DESCRIPTION

The collaboration between Foscarini and Marc Sadler began with Mite; a floor lamp so innovative that it was awarded the Compasso d'Oro in 2001. The company and the designer even developed a special patent for Mite: a mix of fibreglass and carbon thread that acts as both decoration and a supporting structure at the same time. Technology previously used to produce fishing rods, oars and golf clubs was introduced to the lighting world for the first time. The extreme flexibility of this material – which is light and resistant at the same time – has enabled the design of an entire collection of lamps for various different uses. This is how Tite came to exist, a suspension lamp also seems to recall a section of the body of Mite in its shape, upset and suspended: a circular-section shape that broaden downwards. The light bulb is close to the lower bottom, source enlighten evenly the diffuser, giving prominence to the decoration and projecting downward an intense and warm light. This versatility makes these suspensions ideal for any setting, whether domestic or contract, furnishing it with the stylish character that distinguishes the entire collection.

## MATERIALS

Fiberglass fabric with carbonium thread and stainless steel

## COLORS

Black

# Tite 2, sospensione

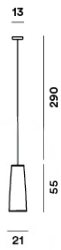
technical details

FOSCARINI

Suspension lamp with diffused and direct light. Diffuser achieved using an artisanal process that entails the application of version a carbon thread for the black version onto a glass fabric. In version 1 nickel-plated diffuser mount and spring to secure the light bulb in the middle of the diffuser. Ceiling rose with galvanised metal bracket and nickel coated metal cover. Canopy decentralization kit - multiple canopy available (up to 9 suspension lamps).

## Tite 2

### SCHEMATIC & LIGHT EMISSION



### MATERIAL

Fiberglass fabric with carbonium thread and stainless steel

### COLORS



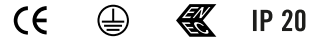
### ACCESSORIES

Round multiple canopy  
Linear multiple canopy 90 cm  
Linear multiple canopy 135 cm  
Kit C  
Kit M

### LIGHT SOURCE

Halo  
116WE27  
Dimmerabile

### CERTIFICATIONS



### ENERGY EFFICIENCY

A+, A

## Tite 2, sospensione

Designer

---

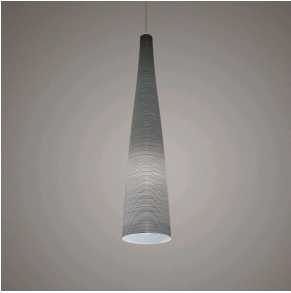
FOSCARINI

### MARC SADLER

Marc Sadler boasts lengthy experience as an industrial designer in the field of sports, which has often led him to experiment with new materials and innovative production processes.

This innovative and experimental approach has become his modus operandi, even when he designs for sectors which are traditionally more focused on the styling component. He has won four Compassi d'Oro ADI, including the one for Mite and Tite in 2001, for projects which have become genuine icons in the Foscarini collection, together with Kite, Twigg, Tress and Jamaica, each one marked by technological and styling innovation.





**Tite 1**