

# Chouchin Reverse 2, sospensione

by Ionna Vautrin

FOSCARINI



## DESCRIPTION

Chouchin is a Japanese word meaning those traditional symbolic paper and bamboo lanterns typically used as light and bright signs outside restaurants and bars, or as lucky charms outside homes. Simple and stylish, Chouchin teams unique craft-based expertise with a modern and strikingly simple style. The Chouchin family comprises 3 models with a coloured matt glass body. Beside the first version a new one is born: Chouchin reverse. The shapes are the same but the colours have been inverted; the diffuser is now white while the collar stays the same colour as the previous shape. It is not just about a new colour, but rather a new light, a new use even. Indeed, Chouchin reverse, thanks to the pale blown glass diffuser, not only directs light downwards – like the original Chouchin - but it also diffuses a brilliant, flowing and emotional light into its surroundings.

## MATERIALS

Lacquered blow glass

## COLORS

White/Green, White/Black, White

# Chouchin Reverse 2, sospensione

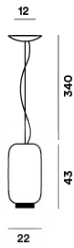
technical details

FOSCARINI

Suspension lamp with diffused and direct down light. The hand-blown cased glass diffuser is plain liquid coated with a glossy finish. Injection moulded transparent polycarbonate diffuser support, stainless steel suspension cable and transparent electrical cable. Ceiling rose with galvanised metal bracket and glossy white batch-dyed ABS cover. Canopy decentralisation kit - multiple canopy available (up to 6 suspension lamps).

## Chouchin Reverse 2

### SCHEMATIC & LIGHT EMISSION



### MATERIAL

Lacquered blow glass

### COLORS



### ACCESSORIES

Round multiple canopy  
Linear multiple canopy 90 cm  
Linear multiple canopy 135 cm  
Kit B  
Kit F  
Kit M

### LIGHT SOURCE

LED retrofit included  
21WE27  
2700 K 2500 lm CRI>80  
dimmable with TRIAC technology

### CERTIFICATIONS



### ENERGY EFFICIENCY

A+

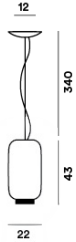
# Chouchin Reverse 2, sospensione

technical details

FOSCARINI

## Chouchin Reverse 2 MyLight

SCHEMATIC & LIGHT EMISSION



MATERIAL

Lacquered blow glass

COLORS



ACCESSORIES

Round multiple canopy  
Linear multiple canopy 90 cm  
Linear multiple canopy 135 cm  
Kit B  
Kit F  
Kit M

LIGHT SOURCE

LED retrofit included  
21WE27  
2700 K 2500 lm CRI>80  
Dimmable via Bluetooth with Casambi App

CERTIFICATIONS

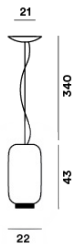


ENERGY EFFICIENCY

A+

## Chouchin Reverse 2 LED

SCHEMATIC & LIGHT EMISSION



MATERIAL

Lacquered blow glass

COLORS



ACCESSORIES

Kit B

LIGHT SOURCE

LED retrofit included  
24WCOB  
2700 K 2581 lm CRI>90  
Dimmable

CERTIFICATIONS



ENERGY EFFICIENCY

A+

# Chouchin Reverse 2, sospensione

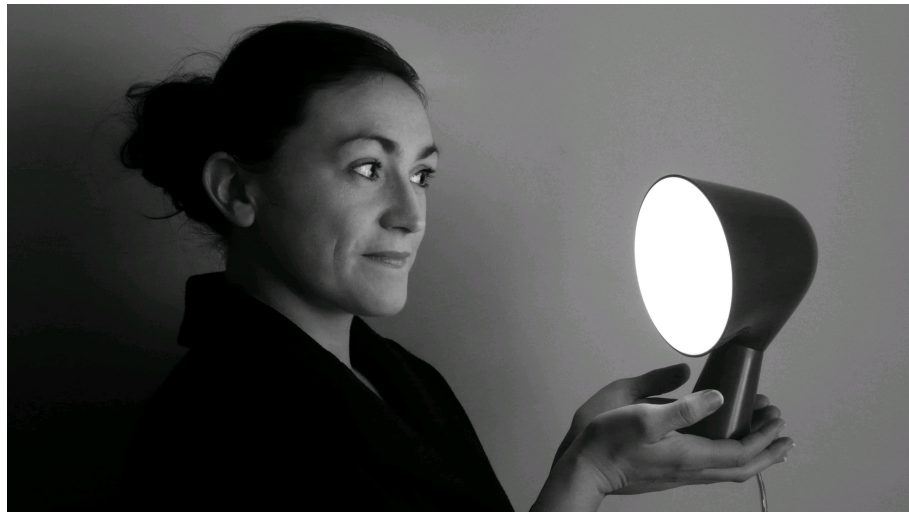
Designer

FOSCARINI

## IONNA VAUTRIN

After multiple European partnerships, and after receiving the “Grand Prix de la Création” in Paris in 2011, she opened her own studio, with an ambition to design immediate yet surprising objects, distinguished by the merger of industry and poetry.

Examples of this philosophy include the Binic table lamp, a small, friendly household spotlight, and the Chouchin family of lamps, with simple, familiar and complementary shapes and colours.

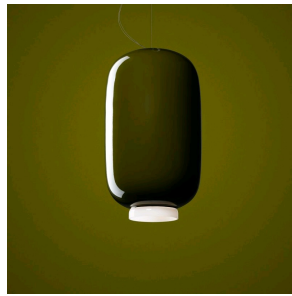


**Chouchin Reverse 2, sospensione**  
family

**FOSCARINI**



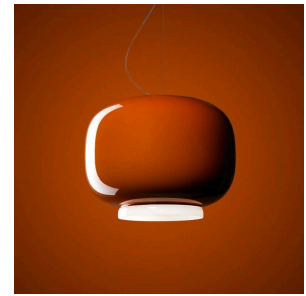
Chouchin Semi



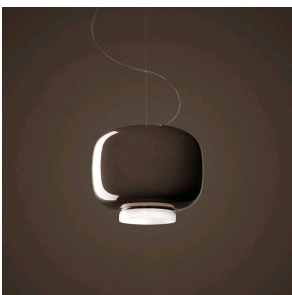
Chouchin 2



Chouchin Reverse 1



Chouchin 1



Chouchin 3



Chouchin Reverse 3