

# 525022

Product Sheet

## ares

THE OUTDOOR BY FLOS

ARES s.r.l - Socio Unico

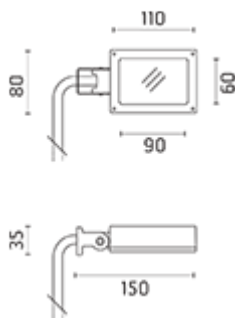
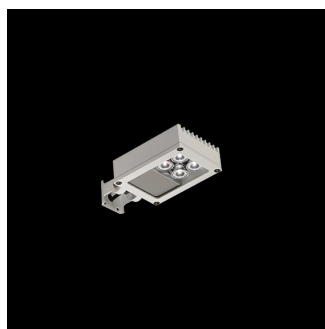
v.le dell'Artigianato n.24 - 20881 Bernareggio - MB (Italy)

www.aresill.net - flos.outdoor@flos.com

## Perseo 4

Adjustable projector for installation on wall, on pole/bracket or on floor. Configuration: die-cast aluminium structure, EN AB-47100 alloy (low copper content). Glass diffuser: extra-clear or sandblasted. Double layer coating for high resistance to corrosion: the aluminium components are painted with a double coat using powders which are compliant with QUALICOAT standards: a first layer of epoxy powder (with excellent chemical and mechanical resistance) and a second finishing layer of polyester powder (resistant to UV rays and atmospheric agents). The entire painting process of the aluminium fitting starts from components which have been sand-blasted in advance to make the surface more porous and increase the adherence of the paint. Ares effects alkaline and acid washing to clean the surfaces completely, then rinses with demineralised water to remove any residue particles, subsequently a chemical conversion treatment is done to protect against rusting. Protection rating: IP65. In compliance with EN60598-1 standards. Class of insulation: II. Installation: the luminaire is equipped with 700mm cable for an easy-to-make connection. The bracket/pole is supplied with a 2-way terminal block for 3-conductor cables - IP68. We recommend the use of a connection system with a protection degree greater than or equal to the protection degree of the luminaire.

Perseo4 Power LED / Transparent Glass -  
Adjustable - Medium beam 40°



### Product Code Details

# 525022

Light Source



NATURAL WHITE 4000K POWER LEDs 4,4W/100÷240V

Total power 7W

LED lm 456 ÷ OUTPUT lm 381

CRI>80

Integral electronic power supply



IP65   

### Available Colors for this Version



1. white



6. grey



3. anthracite



4. black



18. deep brown

### Warnings

#### Projector



Floor installation



Wall fitting



Pre-wired with approx  
700mm of cable.



Protection against impact.  
IK 05 - 0,70 joule

#### Pole Top



Installation on pole



Pre-wired with approx  
700mm of cable.



Protection against impact.  
IK 05 - 0,70 joule

### Light Flux, Placement



Accessories

---



Code: 136  
Ground spike  
H 200 mm



Code: 157  
Wall bracket  
300 mm



Code: 158  
Wall bracket  
600 mm



Code: 237  
SPD: (Surge Protection Device) 275Vac  
Maximum discharge current 10KA (8/20µs)  
Maximum operating current 5A  
Suitable for series connection - IP66