

8911023

Product Sheet

ares

THE OUTDOOR BY FLOS

ARES s.r.l - Socio Unico
v.le dell'Artigianato n.24 - 20881 Bernareggio - MB (Italy)
www.aresill.net - flos.outdoor@flos.com

Paola

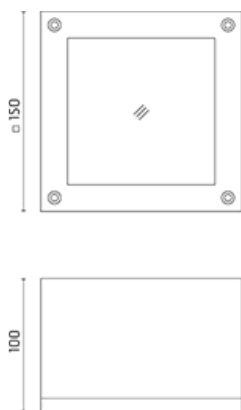
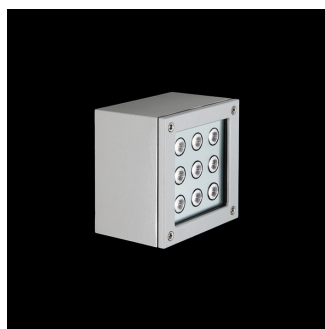
Luminaire for installation on wall or on ceiling - surface mounted. Configuration: die-cast aluminium structure, EN AB-47100 alloy (low copper content). Glass diffuser: transparent or sandblasted, fixed to the aluminium frame through a robotic gluing system. Double layer coating for high resistance to corrosion: the aluminium components are painted with a double coat using powders that are compliant with QUALICOAT standards: a first layer of epoxy powder (with excellent chemical and mechanical resistance) and a second finishing layer of polyester powder (resistant to UV rays and atmospheric agents). The entire painting process of the aluminium fitting starts from components that have been sandblasted in advance to make the surface more porous and increase the adherence of the paint. Ares effects alkaline and acid washing to clean the surfaces completely, then rinses with demineralised water to remove any residue particles, subsequently a chemical conversion treatment is done to protect against rusting. Protection rating: IP65. In compliance with EN 60598-1 standards. Class of insulation: I. Installation: Paolina: wiring through a PG9 nickel-plated brass cable gland (3,5mm-Ø<8mm cables); Paola: wiring through two M16 plastic cable glands (4,5mm-Ø<10mm cables). Outdoor use requires suitable flexible cables assuring the watertightness of the cable gland.

IP65  

Available Colors for this Version



Paolina Power LED / Transparent Glass - Symmetric Optic - Medium Beam 40°



Warnings

Wall/Ceiling



Ceiling fitting



Wall fitting



The fitting is equipped with 1 cable input for Paolina



The fitting is equipped with 2 cable input for Paola.



Protection against impact.
IK 08 - 5,00 joule for Paola
IK 07 - 2,00 joule for Paolina

Product Code Details

8911023

Light Source



WARM WHITE 3000K POWER LEDs 9,9W /220-240V

Total power 12W

LED lm 963 ÷ OUTPUT lm 742

CRI>80

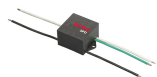
Integral electronic power supply



Light Flux, Placement



Accessories



Code: 237
SPD: (Surge Protection Device) 275Vac
Maximum discharge current 10KA (8/20 μ s)
Maximum operating current 5A
Suitable for series connection - IP66